

## Armstrong Excelon Tile

Excelon Vinyl-Asbestos Tile is representative of today's most widely used resilient flooring material for all grade levels in schools, offices, shopping plazas, and similar public and commercial buildings. It is an economical flooring, yet its many practical advantages include durability and resistance to grease, alkali, and dilute chemicals.

The various stylings in Excelon Tile provide the architect and interior designer wide scope in floor designs and colorings to meet the needs of all types of architectural design and decoration.

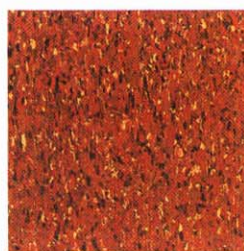
### Imperial Series

This group of Excelon Tile patterns is well-suited to heavy-traffic commercial interiors such as entrance lobbies, corridors, and shopping malls. Three interesting designs are included, offering a wide choice of colors ranging from warm to cool, from muted to bright. Color and pattern detail are dispersed throughout the thickness of the tile; they will last the life of the floor.

**Form/gauge:** 12" x 12" —  
1/8", 3/32" gauges  
**Approx. installed price per sq ft:** \$1.05/\$1.30  
**Recommended load limit:**  
50 lb per sq in.  
**Durability:** superior (1/8"),  
excellent (3/32")  
**Resilience:** fair  
**In-room quietness:**  
acceptable  
**Ease of maintenance:**  
excellent

### Imperial Texture

This design intermixes a variety of strong accent colors to create a textured, tweedy design that helps to hide heel and scuff marks.



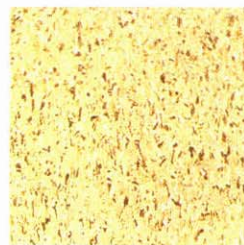
51833 Temple Orange



51836 Shelter White



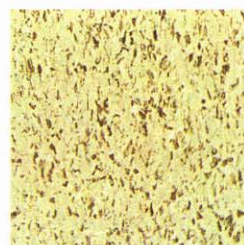
51837 Palace Beige



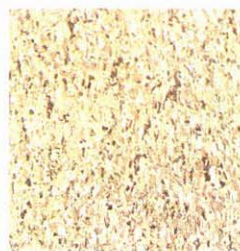
51838 Mansion Gold



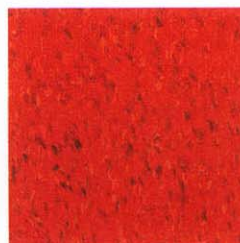
51839 Fortress White



51840 Tent Olive



51841 Castle Greige



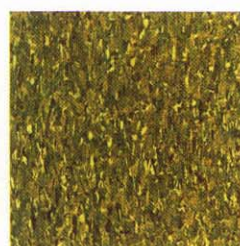
51842 Pagoda Red



51843 Casa Orange



51844 Cathedral Gold



51845 Manor Green



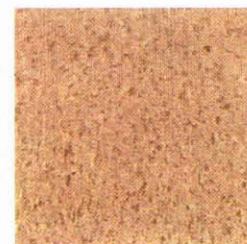
51846 Teahouse Blue

### Imperial Modern

A tapestrylike design with relatively nondirectional graining. Its combination of highlight, middletone, and shadow creates a three-dimensional appearance.



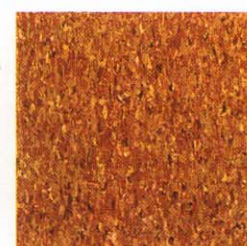
51850 Fleece White



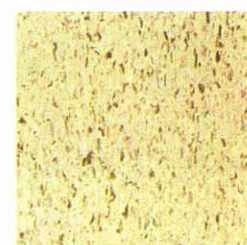
51851 Mellow Sand



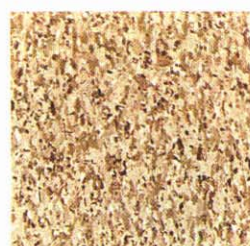
51854\*† Char Brown



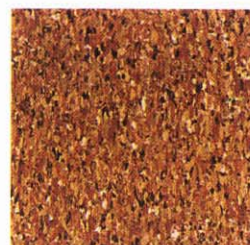
51855 Medium Cork



51856 Bayberry White



51830 Cottage Tan

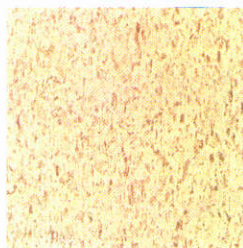


51831\* Tower Gold

\*Not available in 3/32"

†Recommended for use primarily as an accent color, not as a field color

**Imperial Modern** (continued)



51858 Sandrift White

**Classic Travertine**

(Embossed)

Like all Excelon Tile in the 1/8" gauge, Classic Travertine stylings make these durable vinyl-asbestos floors well-suited for commercial interiors.

**Form/gauge:** 12" x 12" — 1/8" gauge  
**Approx. installed price per sq ft:** \$1.10/\$1.35  
**Recommended load limit:** 50 lb per sq in.  
**Durability:** very good  
**Resilience:** fair  
**In-room quietness:** acceptable  
**Ease of maintenance:** very good

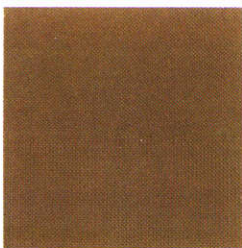
**Feature Tile**

A wide selection of bold solid-color tiles used for accents.

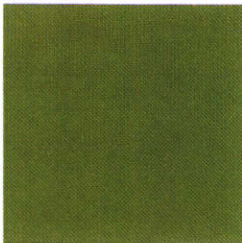
**Form/gauge:** 12" x 12" — 1/8" gauge  
**Approx. installed price:**  
 Group I—per sq ft—\$1.25/\$1.60  
 Group II—per sq ft—\$1.50/\$1.75

**Recommended load limit:** 50 lb per sq in.  
**Durability:** superior  
**Resilience:** fair  
**In-room quietness:** acceptable

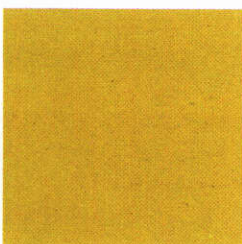
**Maintenance:** These solid-color tiles are not recommended for an entire flooring field because, like plain-colored floors of any composition, they tend to show scratches and soiling more readily than patterned materials.



56807 Neutral II



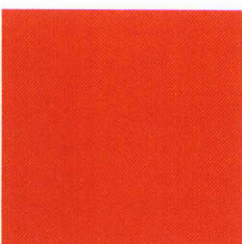
56808 Celery II



56809 Yellow II



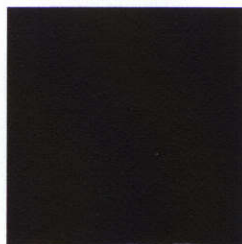
56810 Gold II



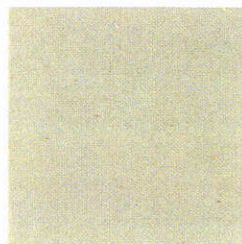
56811 Orange II



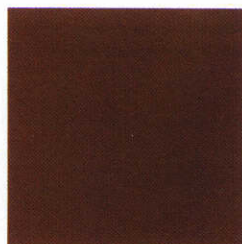
56812 Blue II



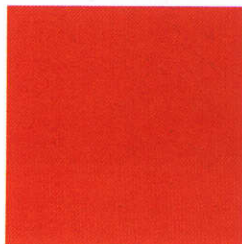
56790 Black I



56791 White I



56797 Chocolate II



56806 Red II

**Custom**

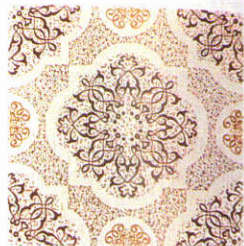
Unique floor decoration in embossed styles that create distinctive overall designs; can be used as accents in individualized custom effects.

**Form/gauge:** 12" x 12" — service gauge  
**Approx. installed price per sq ft:** \$.80/\$1.05  
**Recommended load limit:** 50 lb per sq in.  
**Durability:** good  
**Resilience:** fair  
**In-room quietness:** acceptable  
**Ease of maintenance:** good

**Salvador**



57171 Yellow



57174 Brown/Tan



57175 Gold/Green

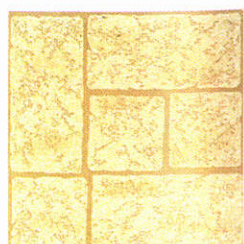
**Country Brick**



57400 Terra Cotta



57401 White



57403 Almond

**Palatial**



51601 Nice Gold



51602 Alba Beige



51603 Cannes Beige



51607 Corsica Olive

**Feature Strips**

All colors shown here are available in Feature Strips (1" x 24") for custom floor design. Feature Strips are identified by changing the

first two digits from 56 in Feature Tile (56)790 to 50 for Feature Strip (50)790. Feature Strips are available in both 1/8" and service gauges.

Los Alamos



57280 Multi

Dianna White



51200 Olympus

Oak Knoll



57200 Saddle

Devonslate



57210 Red



57342 Blue



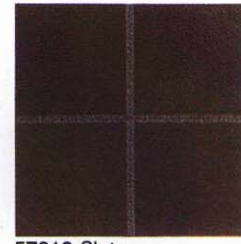
57281 Green



51202 Caligua  
**San Roque**



57202 Walnut



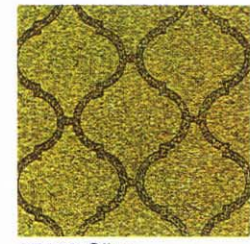
57212 Slate  
**Regency Square**



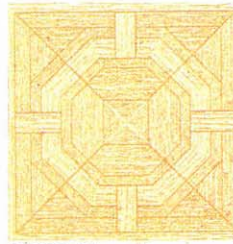
57343 Gold  
**Surry Square**



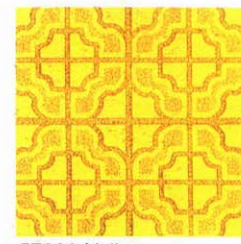
57283 Yellow  
**Eden Wood**



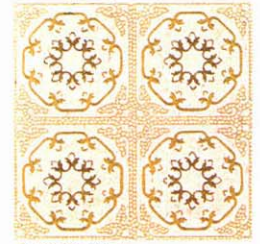
57160 Olive



57203 Almond  
**Bradford Brick**



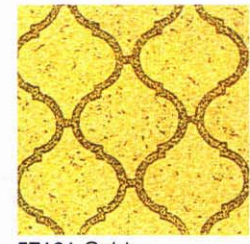
57230 Yellow



57350 White



57140 Walnut



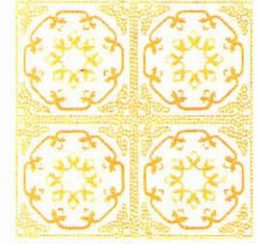
57161 Gold



57220 Red



57232 White  
**Desert Sage**



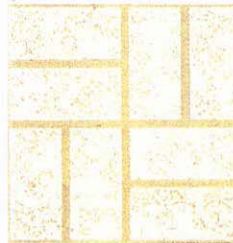
57351 Gold



57141 Saddle



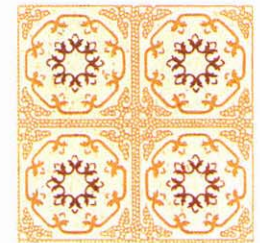
57163 Red



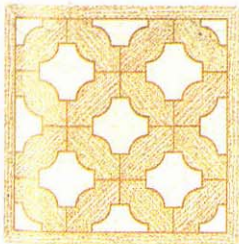
57221 White



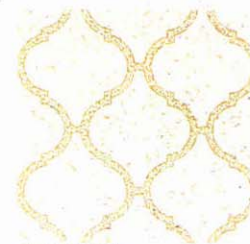
57340 Almond



57352 Brown



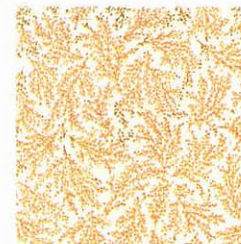
57142 White



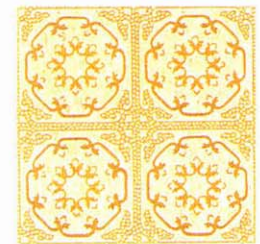
57164 White



57222 Almond



57341 Beige



57353 Green/Orange