

Armstrong Excelon Tile

Excelon Vinyl-Asbestos Tile is representative of today's most widely used resilient flooring material for all grade levels in schools, offices, shopping plazas, and similar public and commercial buildings. It is an economical flooring, yet its many practical advantages include durability and resistance to grease, alkali, and dilute chemicals.

The various stylings in Excelon Tile provide the architect and interior designer wide scope in floor designs and colorings to meet the needs of all types of architectural design and decoration.

IMPERIAL SERIES

This group of Excelon Tile patterns is well-suited to heavy-traffic commercial interiors such as entrance lobbies, corridors, and shopping malls. Three interesting designs are included, offering a wide choice of colors ranging from warm to cool, from muted to bright. Color and pattern detail are dispersed throughout the thickness of the tile; they will last the life of the floor.

Form/gauge: 12" x 12" —
1/8", 3/32" gauges

Approx. installed price per sq ft: \$.50/\$.65 (1/8")

Recommended load limit:
50 lb per sq in.

Durability: superior (1/8"),
excellent (3/32")

Resiliency: fair

In-room quietness: acceptable

Ease of maintenance: excellent

IMPERIAL TEXTURE

This design intermixes a variety of strong accent colors to create a textured, tweedy design that helps to hide heel and scuff marks.



51830 Cottage Tan



51836 Shelter White



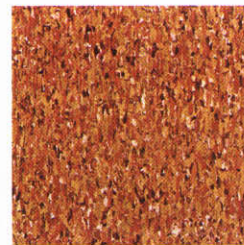
51839 Fortress White



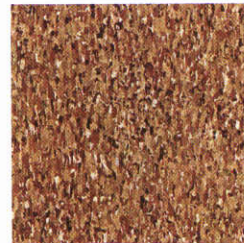
51842 Pagoda Red



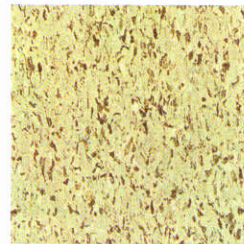
51844 Cathedral Gold



51831* Tower Gold



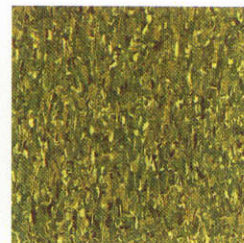
51837 Palace Beige



51840 Tent Olive



51843 Casa Orange



51845 Manor Green



51846 Teahouse Blue



51833 Temple Orange



51838 Mansion Gold



51841 Castle Greige



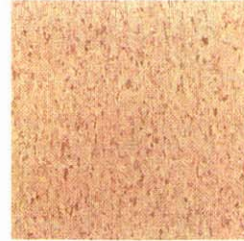
*Not available in 3/32"

IMPERIAL MODERN

A tapestrylike design with relatively nondirectional graining. Its combination of highlight, middletone, and shadow creates a three-dimensional appearance.



51850 Fleece White



51851 Mellow Sand



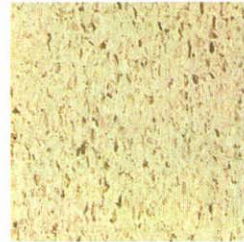
56880* Terrace White



51854*† Char Brown



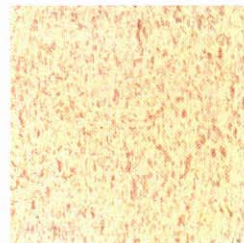
51855 Medium Cork



51856 Bayberry White



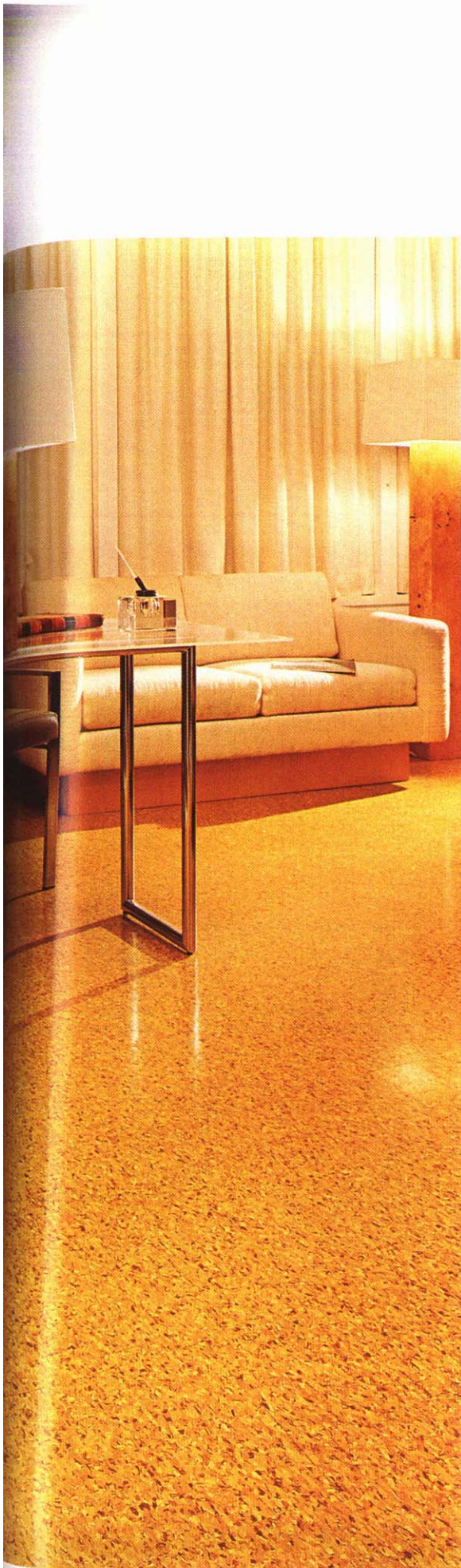
51857 Olive



51858 Sandrift White

IMPERIAL

A terrazzolike chip design with subtle coloration.



†Recommended for use primarily as an accent color, not as a field color.

Armstrong Excelon Tile

TRAVERTEX

The Travertex graining image shows both directional and linear striations and randomly dispersed flecks of color in shades darker than the base color.

Form/gauge: 12" x 12" —
1/8" gauge

Approx. installed price per sq ft:
\$.50/\$.65

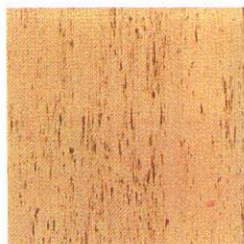
Recommended load limit:
50 lb per sq in.

Durability: superior

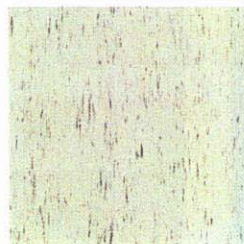
Resilience: fair

In-room quietness: acceptable

Ease of maintenance: excellent



51130 Briar Tan



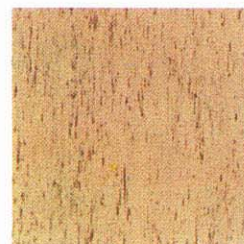
51131 Frost White



51133 Cream White



51137 Harvest Ivory



51138 Nougat Beige

STRAIGHT GRAIN

Directional marbled graining is randomly dispersed throughout the tile. The striations stand out from the background as either a light or dark value or as a combination of both.

Form/gauge: 12" x 12" —
1/8" gauge

Approx. installed price per sq ft:
\$.50/\$.65

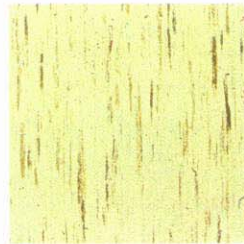
Recommended load limit:
50 lb per sq in.

Durability: superior

Resilience: fair

In-room quietness: acceptable

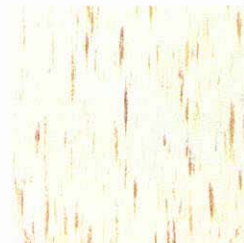
Ease of maintenance: excellent



56710 White Bayberry



56742 White



56759 Fawn White



56783 Iroquois Tan

CLASSIC TRAVERTINE (Embossed)

Like all Excelon Tile in the 1/8" gauge, Classic Travertine stylings make these durable vinyl-asbestos floors well-suited for commercial interiors.

Form/gauge: 12" x 12" —
1/8" gauge

Approx. installed price per sq ft: \$.50/\$.70

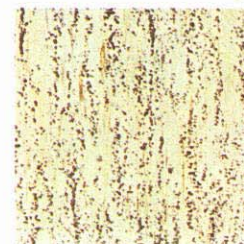
Recommended load limit:
50 lb per sq in.

Durability: very good

Resilience: fair

In-room quietness:
acceptable

Ease of maintenance: very good



51880 White



51881 Beige



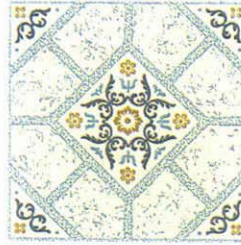


CUSTOM

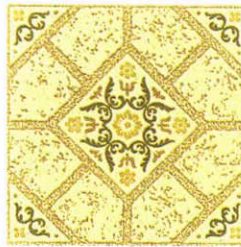
Unique floor decoration in embossed styles that create distinctive overall designs; can be used as accents in individualized custom effects.

Form/gauge: 12" x 12"—service gauge
Approx. installed price per sq ft: \$.30/\$.40
Recommended load limit: 50 lb per sq in.
Durability: good
Resilience: fair
In-room quietness: acceptable
Ease of maintenance: good

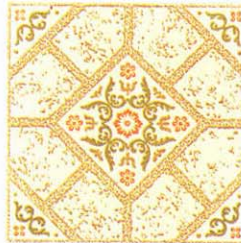
BURNHAM



57080 Blue



57081 Olive



57083 Tan

LOS ALAMOS



57280 Multi



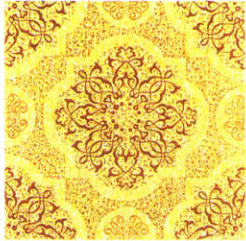
57283 Yellow



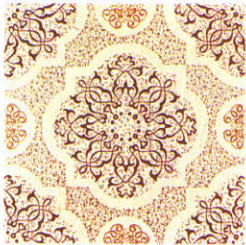
57284 Red

**Armstrong
Excelon
Tile**

SALVADOR



57171 Yellow

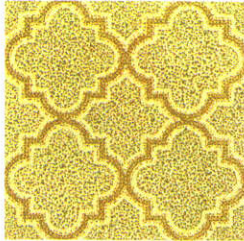


57174 Brown/Tan

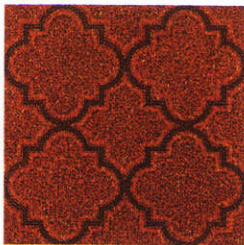


57175 Gold/Green

SAN PEDRO



57072 Gold



57073 Orange



57074 Gold White

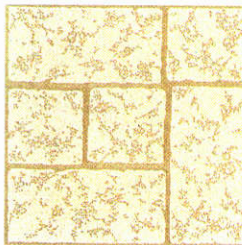


57075 Red

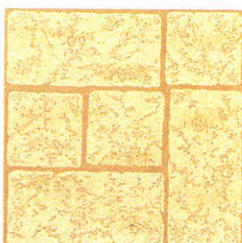
COUNTRY BRICK



57400 Terra Cotta



57401 White



57403 Almond

VILLA COURT



57330 White



57331 Almond



57332 Yellow

EDEN WOOD



57140 Walnut

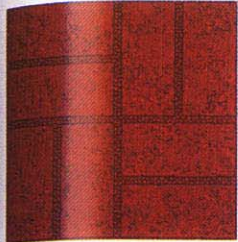


57141 Saddle

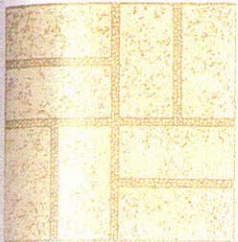


57142 White

GLENMOORE BRICK



57130 Red



57131 White



57132 Gold

FEATURE TILE

A wide selection of bold solid-color tiles used for accents. They are not recommended for floor field.

Form/gauge: 12" x 12"—
1/8" gauge

Approx. installed price:

Group I—per sq ft—\$.75/\$.90

Group II—per sq ft—\$.90/\$1.05

Recommended load limit:
50 lb per sq in.

Durability: superior

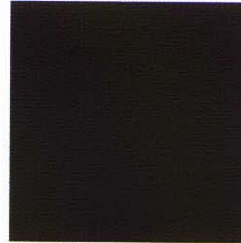
Resilience: fair

In-room quietness: acceptable

Maintenance: These solid-color tiles have been created expressly for use as accent spots with other 1/8" gauge Excelon stylings. They are not recommended for an entire flooring field because, like plain-colored floors of any composition, they tend to show scratches and soiling more readily than patterned materials.

FEATURE STRIPS

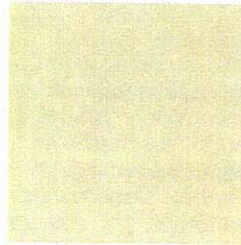
All colors shown here are available in Feature Strips (1" x 24") for custom floor design. Feature Strips are identified by changing the first two digits from 56 in Feature Tile (56)790 to 50 for Feature Strip (50)790. Feature Strips available in both 1/8" and service gauges.



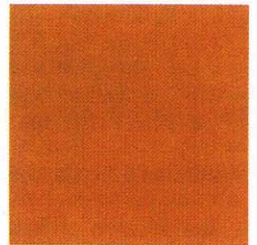
56790 Black I



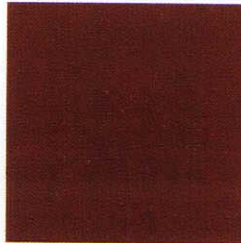
56809 Yellow II



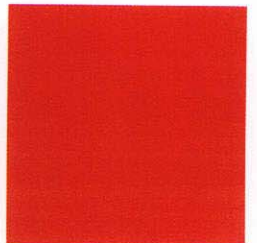
56791 White I



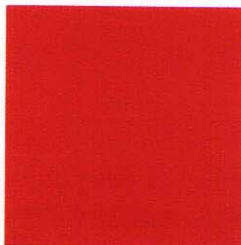
56810 Gold II



56797 Chocolate II



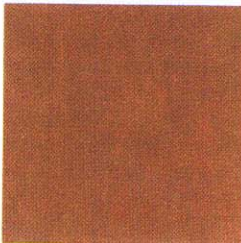
56811 Orange II



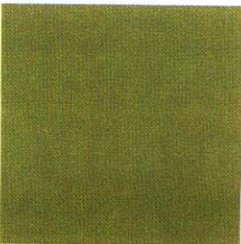
56806 Red II



56812 Blue II



56807 Neutral II



56808 Celery II