

**Imperial Series**

This group of Excelon Tile patterns is well-suited to heavy-traffic commercial interiors such as entrance lobbies, corridors, and shopping malls. Three interesting designs are included, offering a wide choice of colors ranging from warm to cool, from muted to bright. Color and pattern detail are dispersed throughout the thickness of the tile; they will last the life of the floor.

Form/gauge: 12" x 12"— $\frac{1}{8}$ ",  $\frac{3}{32}$ " gauges

Approx. installed price per sq ft: \$.45/\$.60 ( $\frac{1}{8}$ "')

Recommended load limit: 50 lb per sq in.

Durability: superior ( $\frac{1}{8}$ "'), excellent ( $\frac{3}{32}$ "')

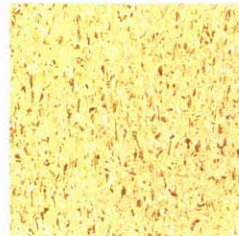
Resilience: fair

Quietness: acceptable

Ease of maintenance: excellent



51830\* Cottage Tan



51838\* Mansion Gold



51843 Casa Orange



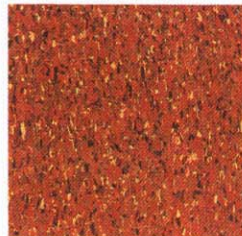
51831 Tower Gold



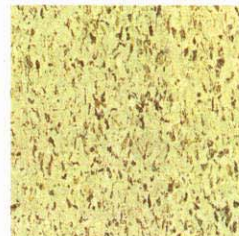
51839\* Fortress White



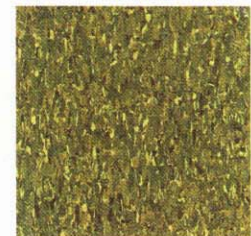
51844 Cathedral Gold



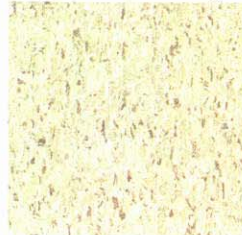
51833\* Temple Orange



51840\* Tent Olive



51845 Manor Green



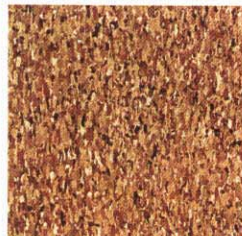
51836\* Shelter White



51841\* Castle Greige



51846 Teahouse Blue



51837\* Palace Beige



51842 Pagoda Red

**Imperial Texture**

This design intermixes a variety of strong accent colors to create a textured, tweedy design that helps to hide heel and scuff marks.

\*Pattern numbers starred with an asterisk are available in both  $\frac{1}{8}$ " and  $\frac{3}{32}$ " gauges. All other  $\frac{1}{8}$ " gauge Excelon patterns may be obtained in  $\frac{3}{32}$ " gauge on special orders of 20,000 sq ft or more.





EXCELON TILE

**Imperial Modern**

A tapestrylike design with relatively nondirectional graining. Its combination of highlight, middletone, and shadow creates a three-dimensional appearance.



51850\* Fleece White



51855\* Medium Cork



51851\* Mellow Sand



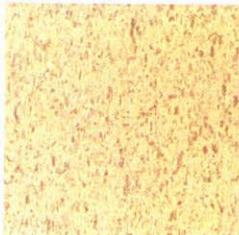
51856\* Bayberry White



51854 Char Brown



51857\* Olive



51858\* Sandrift White

\*Pattern numbers starred with an asterisk are available in both 1/8" and 3/32" gauges. All other 1/8" gauge Excelon patterns may be obtained in 3/32" gauge on special orders of 20,000 sq ft or more.

**Imperial**

A terrazzolike chip design with subtle coloration.



56880 Terrace White



Imperial Texture 51844

**Travertex**

The Travertex graining image shows both directional and linear striations and randomly dispersed flecks of color in shades darker than the base color.

Form/gauge: 12" x 12"—1/8" gauge

Approx. installed price per sq ft: \$.45/\$.60

Recommended load limit: 50 lb per sq in.

Durability: superior

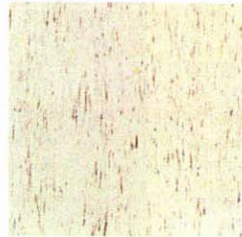
Resilience: fair

Quietness: acceptable

Ease of maintenance: excellent



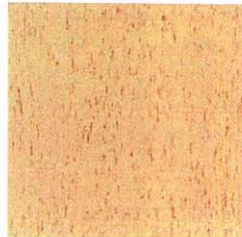
**51130** Briar Tan



**51131** Frost White



**51133** Cream White



**51137** Harvest Ivory

**Straight Grain**

Directional marbled graining is randomly dispersed throughout the tile. The striations stand out from the background as either a light or dark value or as a combination of both.

Form/gauge: 12" x 12"—1/8" gauge

Approx. installed price per sq ft: \$.45/\$.60

Load limit: 50 lb per sq in.

Durability: superior

Resilience: fair

Quietness: acceptable

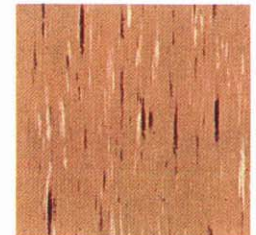
Ease of maintenance: excellent



**56742** White



**56759** Fawn White



**56783** Iroquois Tan



**EXCELON TILE**

**Classic Travertine**  
(Embossed)

Like all Excelon Tile in the 1/8" gauge, Classic Travertine stylings make these durable vinyl-asbestos floors well-suited for heavy-traffic commercial interiors.

Form/gauge: 12" x 12"—1/8" gauge

Approx. installed price per sq ft: \$.50/\$.65

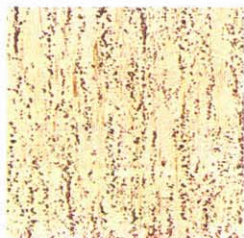
Recommended load limit: 50 lb per sq in.

Durability: very good

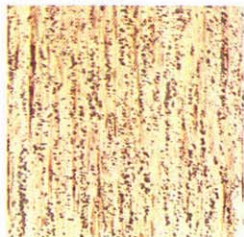
Resilience: fair

Quietness: acceptable

Ease of maintenance: very good



**51880** White



**51881** Beige

**Feature Tile**

A wide selection of bold solid-color tiles used for accents. They are not recommended for floor field.

Form/gauge: 12" x 12"—1/8" gauge

Approx. installed price:  
Group I—per sq ft—\$.70/\$.85  
Group II—per sq ft—\$.85/\$1.00

Recommended load limit: 50 lb per sq in.

Durability: superior

Resilience: fair

Quietness: acceptable

Maintenance: These solid-color tiles have been created expressly for use as accent spots with other 1/8" gauge Excelon stylings. They are not recommended for an entire flooring field because, like plain-colored floors of any composition, they tend to show scratches and soiling more readily than patterned materials.

**Feature Strips**

All colors shown here are available in Feature Strips (1" x 24") for custom floor design. Feature Strips are identified by changing the first two digits from 56 in Feature Tile (56)790 to 50 for Feature Strip (50)790. Feature Strips available in both 1/8" and service gauges.



**56790** Black I



**56791** White I



**56797** Chocolate II



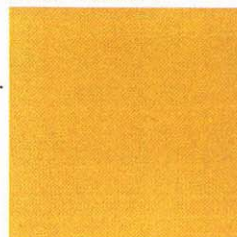
**56806** Red II



**56807** Neutral II



**56808** Celery II



**56809** Yellow II



**56810** Gold II



**56811** Orange II



**56812** Blue II





**EXCELON TILE**

**Craftlon**

Traditional brick design, recommended for residential floors. The .080" gauge provides good durability.

Form/gauge: 9" x 9" — .080" gauge

Approx. installed price per sq ft: \$.55/\$.65

Recommended load limit: 50 lb per sq in.

Durability: good

Resilience: fair

Quietness: acceptable

Ease of maintenance: good

**Custom**

Unique floor decoration in embossed styles that create distinctive overall designs; can be used as accents in individualized custom effects.

Form/gauge: 12" x 12" — service gauge

Approx. installed price per sq ft: \$.30/\$.40

Recommended load limit: 50 lb per sq in.

Durability: good

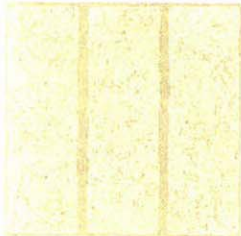
Resilience: fair

Quietness: acceptable

Ease of maintenance: good

**Burnham**

**Romford Brick**



57020 White



57021 Red



57080 Blue



57081 Olive

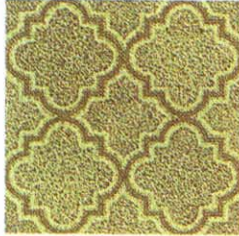


57083 Tan

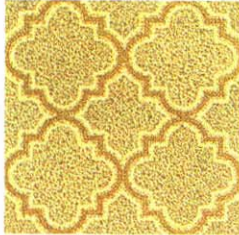
**San Pedro**



57070 Blue White



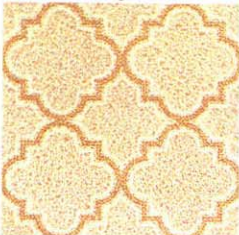
57071 Olive



57072 Gold



57073 Orange



57074 Gold White

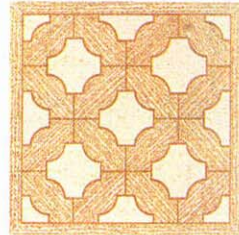
**Eden Wood**



57140 Walnut



57141 Saddle



57142 White



57075 Red

**Los Alamos**



57280 Multi



57281 Green



57283 Yellow



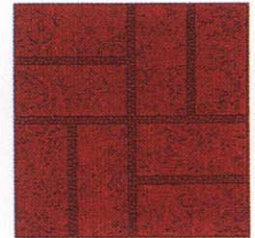
57284 Red





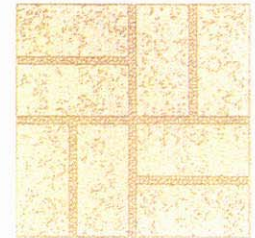
Salvador

Glenmoore Brick



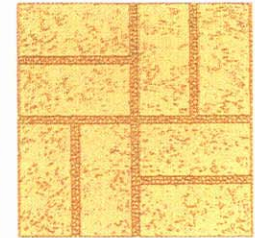
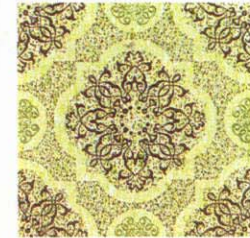
57170 Black/White

57130 Red



57171 Yellow

57131 White



57173 Green

57132 Gold



57174 Brown/Tan



57175 Gold/Green

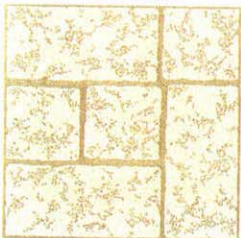


EXCELON TILE

Country Brick



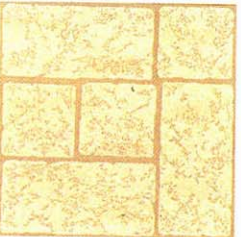
57400 Terra Cotta



57401 White



57402 Burnt Toast



57403 Almond

Abbey Wood



57320 Light



57321 Medium



57322 Dark

**Regular and Promotional**

This line includes both embossed and plain surface stylings in both regular and promotional patterns.

Form/gauge: 12" x 12"—service gauge

Approx. installed price per sq ft: \$.30/\$.40

Recommended load limit: 50 lb per sq in.

Durability: good

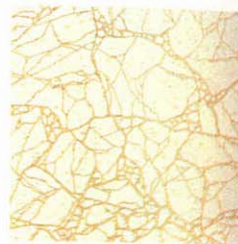
Resilience: fair

Quietness: acceptable

Ease of maintenance:  
excellent (smooth surface)  
good (embossed surface)

Embossed

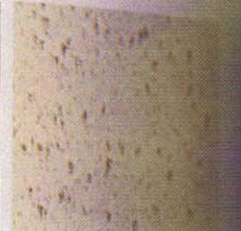
Dianna White



51202 Caligua

Smooth Surface

Dianna White



51200 Olympus

Palatial



51601 Nice Gold



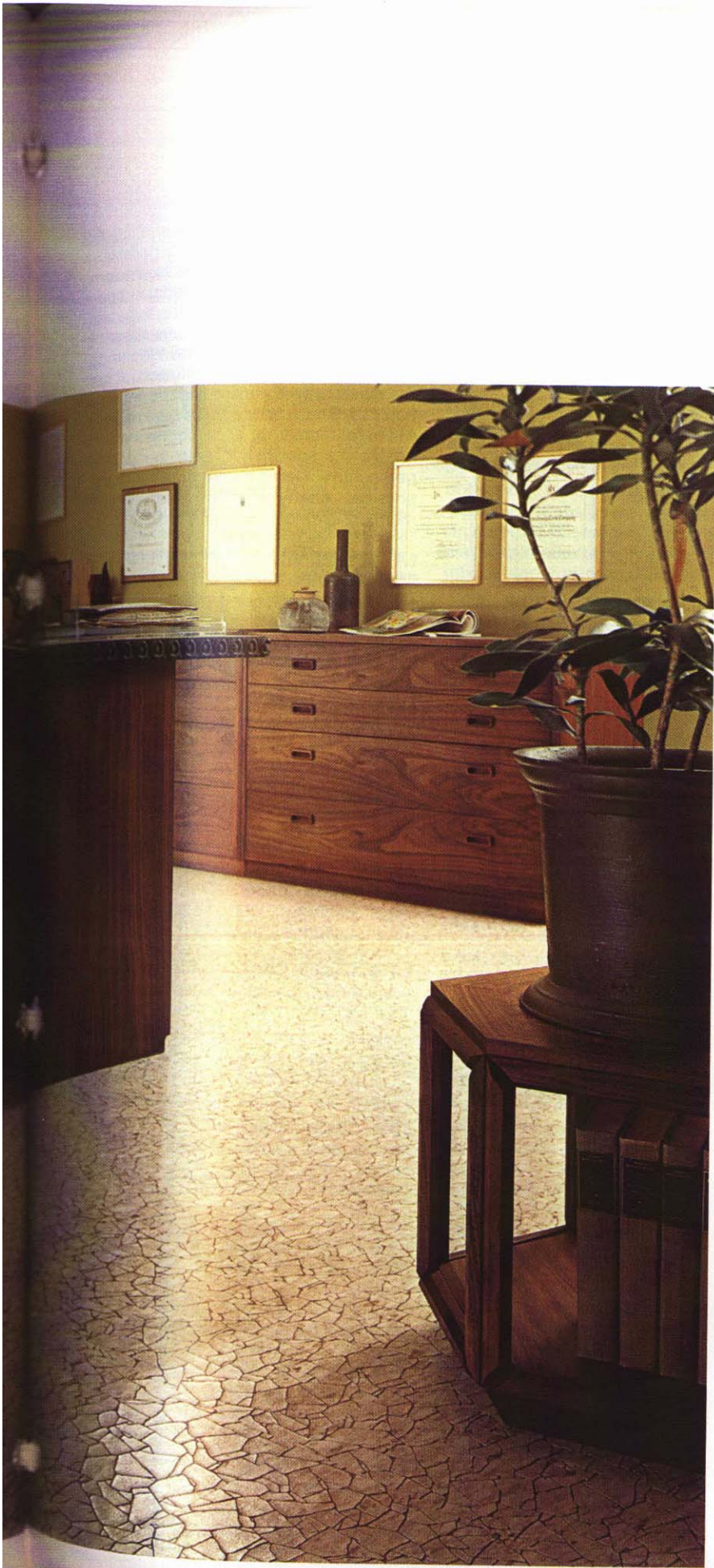
51602 Alba Beige



51603 Cannes Beige



51607 Corsica Olive



Promotional/  
Embossed

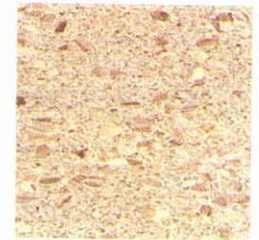
Woodstock



54251 Dark Cherry

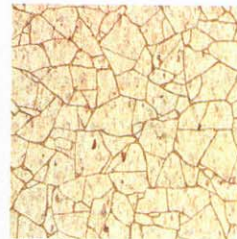
Promotional/  
Smooth Surface

Driftstone



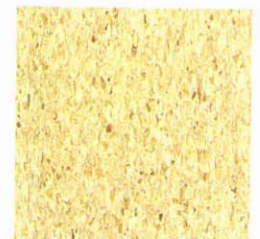
51161 Aztec White

Shattered Stone

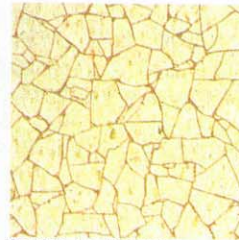


51170 Beige

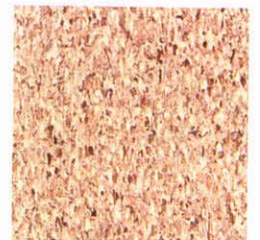
Tidestone



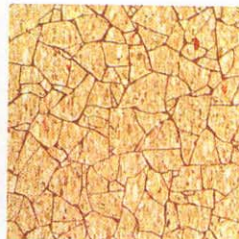
51756 Green



51171 Multi-White



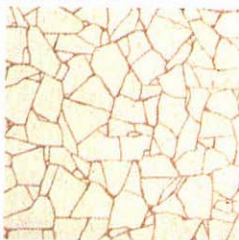
51760 Daytona Taupe



51172 Gold



51762 Acapulco White



51173 White



51764 Malibu Beige