

# Armstrong

Form/gauge—12" x 12" x 1/8", 3/32" gauges  
 Approx. installed price per sq ft—35¢/45¢  
 Recommended load limit—50 lb per sq in.  
 Durability—superior  
 Resilience—fair  
 Quietness—acceptable  
 Ease of maintenance—excellent

## EXCELON TILE (Vinyl-Asbestos)

Excelon Tile is representative of today's most widely used resilient flooring material for all grade levels in schools, offices, shopping plazas, and similar public and commercial buildings. Specially formulated of pure vinyl resins fortified with asbestos fibers, it is an economical flooring, yet its many practical advantages include durability and resistance to grease, alkali, and dilute chemicals.

The various stylings in Excelon Tile provide the architect and interior designer wide scope in floor designs and colorings to meet the needs of all types of architectural design and decoration.

## IMPERIAL MODERN

12" x 12" x 1/8", 3/32"



51850 Fleece White



51851 Mellow Sand



51852 Smoke Beige



51854 Char Brown



51855 Medium Cork



51856 Bayberry White



51857 Olive



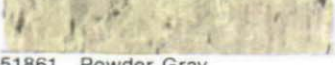
51858 Sandrift White



51859 Sable Gray



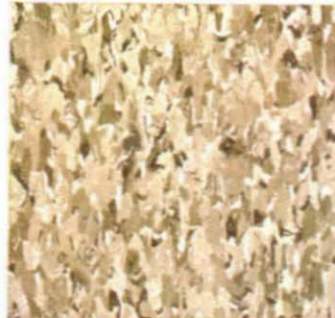
51860 Light Umber



51861 Powder Gray

## IMPERIAL TEXTURE

12" x 12" x 1/8"



51830 Cottage Tan



51831 Tower Gold



51833 Temple Orange



51835 Cabana Olive



51836 Shelter Gray



51837 Palace Beige



51838 Mansion Gold



51839 Fortress White



51840 Tent Olive



51841 Castle Greige

## IMPERIAL 12" x 12" x 1/8"



56880 Terrace White

## TRAVERTEX 12" x 12" x 1/8"



51130 Briar Tan



51131 Frost White



51133 Cream White



51135 Mist White



51137 Harvest Ivory



51138 Nougat Beige

# Armstrong

Form/gauge—9" x 9", 12" x 12"/3/32" gauge  
 Approx. installed price per sq ft—45¢/55¢  
 Recommended load limit—50 lb per sq in.  
 Durability—good  
 Resilience—fair  
 Quietness—acceptable  
 Ease of maintenance—good

## EXCELON TILE (Vinyl-Asbestos)

The durability, economy, and high styling combined in today's offerings in Excelon Tile provide new measures of flooring value. This page and the next three contain four categories of Excelon Tile for unsurpassed selection.

### THE CRAFTLON COLLECTION

Distinctive designs inspired by the craftsmanship of old-world artists and sculptors. Great care has been taken to reproduce every line in three-dimensional detail. Recommended for residential floors, the 3/32" gauge provides good durability. Even the most subtle patterns will keep their beauty for many years.

## CRAFTLON/Adelphi II 12" x 12" x 3/32"



54430 Olive



54431 Aalst



54432 Beige



54433 Baal



54434 Gold

## CRAFTLON/Devonshire Inset 12" x 12" x 3/32"



54451 Brown



54452 Gold



54453 White



54454 Red

## CRAFTLON/Devonshire 12" x 12" x 3/32"



54441 Brown



54442 Gold



54443 White



54444 Red

## CRAFTLON/Verdanza 12" x 12" x 3/32"



54480 Green



54481 White



54482 Brown

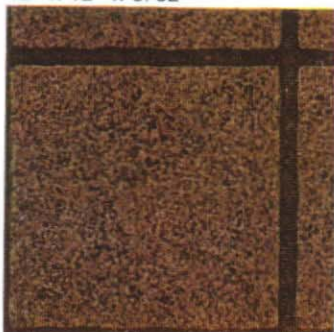


54483 Yellow



54484 Orange

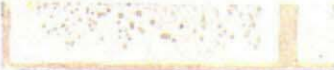
## CRAFTLON/Devonport 12" x 12" x 3/32"



54461 Brown



54462 Gold

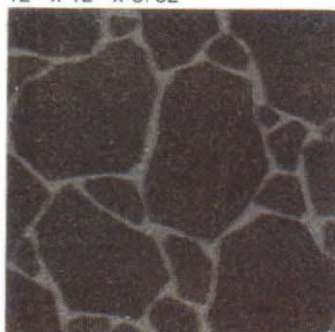


54463 White



54464 Red

## CRAFTLON/Stonefield 12" x 12" x 3/32"



54470 Slate



54471 Olive



54472 White



54473 Red

## CRAFTLON/Romford Brick 9" x 9" x 3/32"



57020 White



57021 Red

# Armstrong

Form/gauge—12" x 12" x 1/16" gauge  
 Approx. installed price per sq ft—35¢/40¢  
 Recommended load limit—50 lb per sq in.  
 Durability—good  
 Resilience—fair  
 Quietness—acceptable  
 Ease of maintenance—good

## EMBOSSED EXCELON TILE (Vinyl-Asbestos)

Unique floor decoration in styles that create distinctive overall designs or to use as accents in individualized custom effects. For example, mix or match Decoresq with Tide-stone Excelon (see page 9) for originality.



### CUSTOM DECORESQ 12" x 12" x 1/16"



57040 Rome White



57041 Dublin Gold



57043 Prague White



57046 Oslo Olive

### CUSTOM SAN PEDRO 12" x 12" x 1/16"



57070 Blue White



57071 Olive



57072 Gold



57073 Orange



57074 Gold White



57075 Red

### CUSTOM OLD FORGE 12" x 12" x 1/16"



57060 Red



57061 White

### CUSTOM BURNHAM 12" x 12" x 1/16"



57080 Blue



57081 Olive



57082 Gold

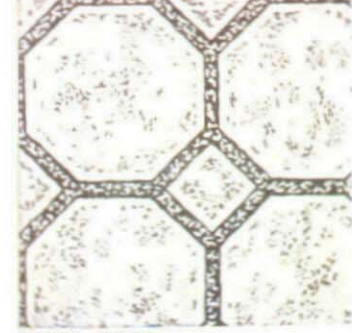


57083 Tan



57084 Brown

### CUSTOM BISQUE 12" x 12" x 1/16"



57090 White



57091 Rust



57092 Beige



57093 Brown



57094 Bronze



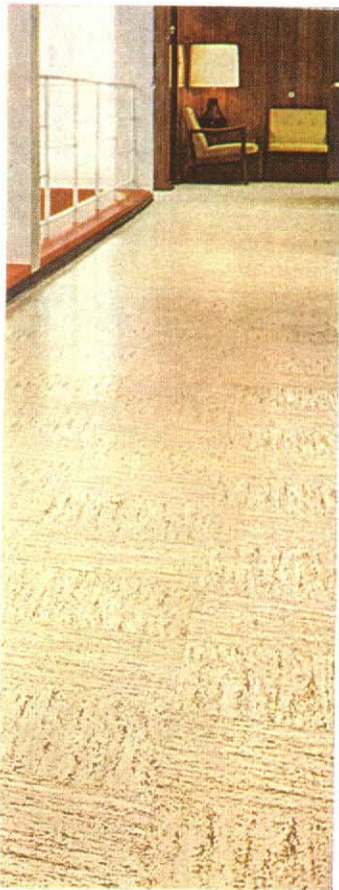
57095 Olive

# Armstrong

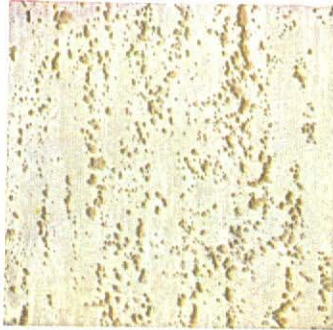
Form/gauge—12" x 12"/1/16", 3/32" gauges  
 Approx. installed price per sq ft—30¢/40¢  
 Recommended load limit—50 lb per sq in.  
 Durability—good  
 Resilience—fair  
 Quietness—acceptable  
 Ease of maintenance—good

## EMBOSSSED EXCELON TILE (Vinyl-Asbestos)

Handsome design effects that duplicate the rich beauty of wood parquet, polished marble, shell, and Travertine Marble—combined with the easy care of vinyl-asbestos flooring.



### TRAVERTINE/Embossed 12" x 12" x 1/16", 3/32"



54220 Catiline



54221 Vetralla (3/32" only)



54222 Ponzano

### POLISHED MARBLE/Embossed 12" x 12" x 1/16"



54190 Statuary White

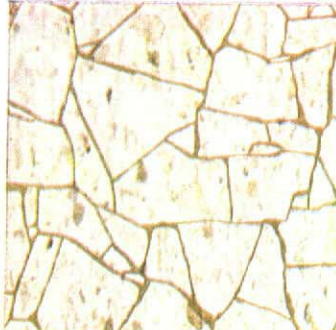


54192 Peruvian Beige



54193 Meadow White

### SHATTERED STONE/Embossed 12" x 12" x 1/16"



51170 Beige

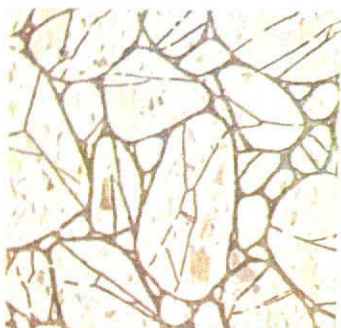


51171 Multi-White



51172 Gold

### TAVARRA/Embossed 12" x 12" x 1/16"



54210 White



54211 Avocado

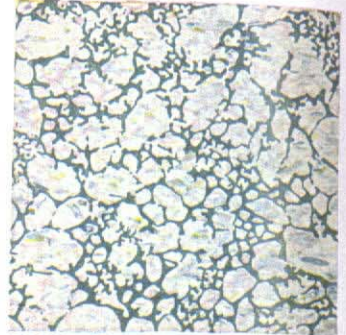


54212 Beige



54213 Copper

### CHANDELLE/Embossed 12" x 12" x 1/16"



54520 Blue-Olive



54521 Olive



54522 White



54523 Gold



54524 Pink-Orange



54525 Multi-White

### WOODSTOCK/Embossed 12" x 12" x 1/16"



54250 Light Cherry



54251 Dark Cherry

# Armstrong

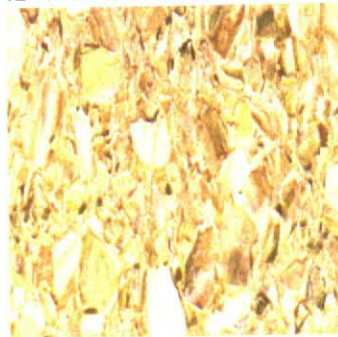
Form/gauge—12" x 12"/1/16" gauge  
 Approx. installed price per sq ft—25¢/30¢  
 Recommended load limit—50 lb per sq in.  
 Durability—good  
 Resilience—fair  
 Quietness—acceptable  
 Ease of maintenance—excellent

## SMOOTH SURFACE EXCELON TILE (Vinyl-Asbestos)

Smooth surface Excelon Tile has long been regarded as the industry standard. This page features the stylings available in 1/16" (service) gauge. Smooth surface Excelon in 1/8" gauge is shown on page 5.

### PALATIAL

12" x 12" x 1/16"



51601 Nice Gold



51602 Alba Beige



51603 Cannes Beige



51604 San Remo White



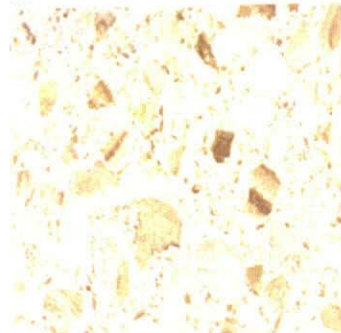
51605 Arles Taupe



51607 Corsica Olive

### DRIFTSTONE

12" x 12" x 1/16"



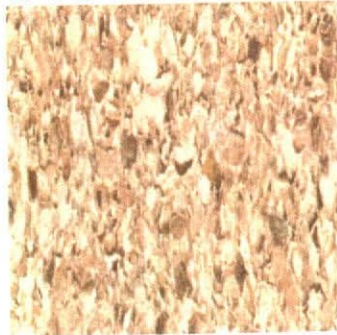
51161 Aztec White



51166 Amazon White

### TIDESTONE

12" x 12" x 1/16"



51760 Daytona Taupe



51762 Acapulco White



51764 Malibu Beige

### DIANNA WHITE

12" x 12" x 1/16"



51200 Olympus (Smooth)



51202 Caligua (Embossed)



51203 Trajan (Embossed)



Form/gauge—12" x 12"/1/8" gauge  
 Approx. installed price per sq ft—35¢/50¢  
 Recommended load limit—50 lb per sq in.  
 Durability—very good  
 Resilience—fair  
 Quietness—acceptable  
 Ease of maintenance—excellent

Form/gauge—12" x 12"/1/8" gauge  
 Approx. installed price per sq ft—  
 35¢/45¢  
 Load limit—50 lb per sq in.  
 Durability—superior  
 Resilience—fair  
 Quietness—acceptable  
 Ease of maintenance—excellent

Form/gauge—12" x 12"/1/8" gauge  
 Group 1—40¢/50¢ per sq ft  
 Group 2—50¢/60¢ per sq ft  
 Load limit—50 lb per sq in.  
 Durability—superior  
 Resilience—fair  
 Quietness—acceptable  
 Ease of maintenance—excellent

**PRESIDENTIAL**  
 12" x 12" x 1/8"



51950 Montpelier Beige



51951 Wheatland White



51952 Monticello Gold



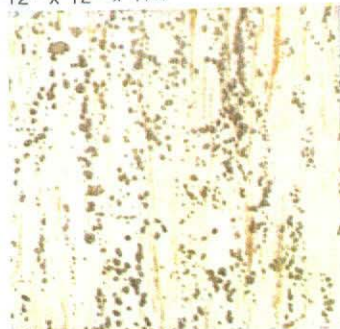
51953 Mt. Vernon Taupe



51954 Sagamore Green

■ The vinyl-formula wear layer on Presidential Excelon and the embossing on Classic Travertine are surface effects and do not extend through the thickness of the tile.

**CLASSIC TRAVERTINE**  
 12" x 12" x 1/8"



51880 White



51881 Beige



51882 Tan



51883 Gray



51884 Mint Green



51885 Olive

**STANDARD 12" x 12" x 1/8"**



56710 White Bayberry



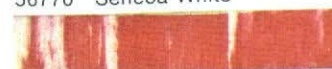
56721 Bayberry Beige



56759 Fawn White



56770 Seneca White



56777 Apache Red



56780 Osage Green



56783 Iroquois Tan

**FEATURE TILE 12" x 12" x 1/8"**



56790 Black



56791 White



56797\* Chocolate



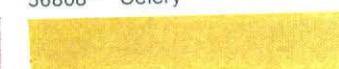
56806\* Red



56807 Neutral



56808\* Celery



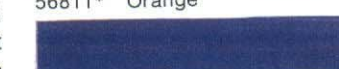
56809\* Yellow



56810\* Gold



56811\* Orange



56812\* Blue



56813\* Gray

**EXCELON FEATURE TILE**

The solid-colored tiles shown in the right-hand column on this page have been created expressly for use as accent spots with other 1/8" gauge Excelon stylings. They are *not* recommended for an entire flooring field because, like plain-colored floors of any composition, they tend to show scratches and soiling more readily than patterned materials.

**EXCELON FEATURE STRIPS**

All colors in Excelon Feature Tile are also available in Feature Strips (1", 2", and 3" wide x 24" long) for accents in custom floor design. Feature Strip colors should be specified by changing the first two digits from 56 in the Feature Tile Series (56)790 to 50 for Feature Strips (50)790.

