

Armstrong

VINYL-ASBESTOS TILE

Embossed and Custom Excelon Tile

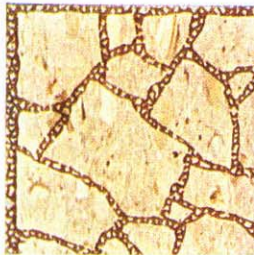
Available in many different pattern series and colors, Armstrong Embossed Excelon offers the builder a wide selection of today's most popular textured surface effects. With the exception of the Custom Excelon series, these handsome stylings are offered at the same economy price as smooth-surfaced Excelon Tile.

EMBOSSED AND CUSTOM EXCELON TILE

Basic materials	Vinyl resins and asbestos fibers
Form/gauge	9" x 9"**, 12" x 12"*** All 1/8" gauge, 1/2"†
Subfloor application	Below grade, on grade, suspended
Recommended use (maximum)	Residential
Approximate installed cost per sq ft	Embossed : 25¢-45¢ Custom : 30¢-45¢
Recommended load limit per sq in.	25 lb
Resistance to heel damage	Good
Resilience	Poor
Quietness	Poor
Durability	Excellent
Grease resistance	Excellent
Surface alkali resistance	Excellent
Resistance to staining	Good
Cigarette burn resistance	Excellent
Ease of maintenance	Excellent

This photograph of an installation of the Shalestone 57000 styling in Custom Excelon Tile demonstrates the manner in which tile joints are hidden by the unique mortar-like edging of the tiles. A similar effect is achieved with installations of the Weathered Brick and Craftstone stylings in Embossed Vinyl Corlon Tile shown on page 14.

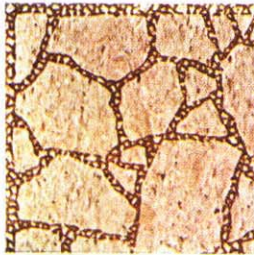
Custom Excelon Tile, Shalestone Series, shown on this page, offers a special feature in the mortar-like edging of each tile. When installed, the edges blend to hide the tile joints creating a unique overall design effect.



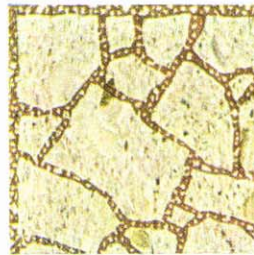
Custom Shalestone 57001**
Tioga Beige



Custom Shalestone 57000**
Bushkill White



Custom Shalestone 57002**
Juniata Beige



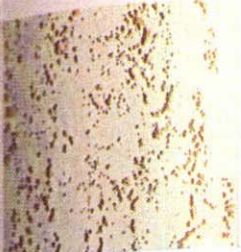
Custom Shalestone 57003**
Seglock Green



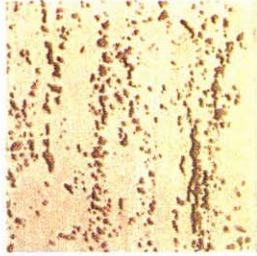
Custom Shalestone 57004**
Towanda Gold



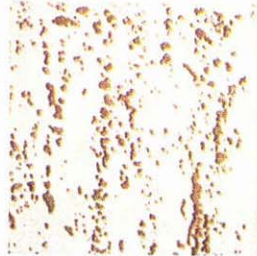
Additional patterns shown on page 17.



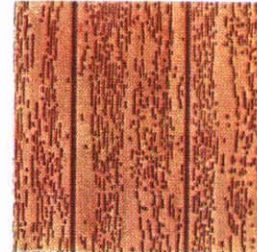
Travertine 54220**†
Catiline



Travertine 54221**†
Vetralla



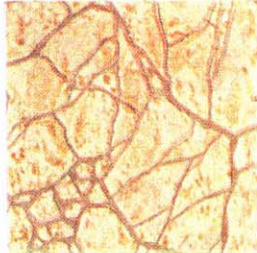
Travertine 54222**†
Ponzano



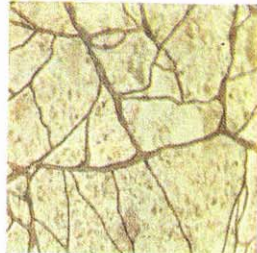
Parquet 54240*
Light Oak



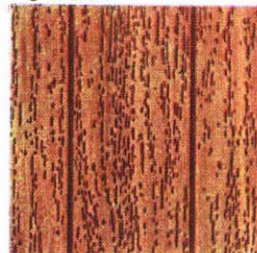
Marble 54230*
Bisque White



Marble 54231*
Quartz Ivory



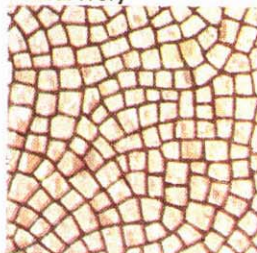
Marble 54233*
Granite Green



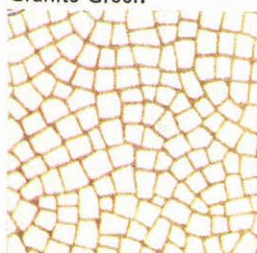
Parquet 54241*
Dark Oak



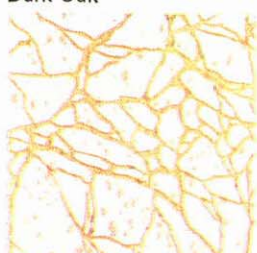
Swirl Chip 54271**
Chartres Taupe



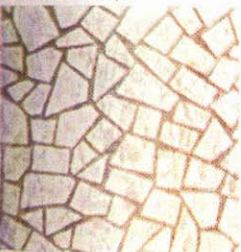
Swirl Chip 54272**
Rheims Beige



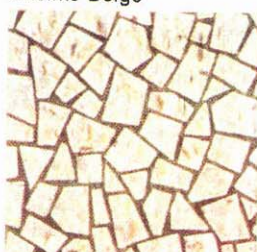
Swirl Chip 54273**
Gothic White



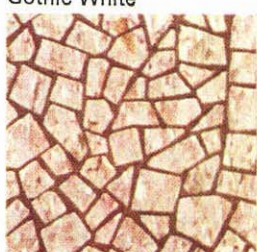
Dianna White 51202**
Caligua



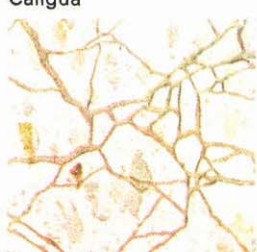
Metric Chip 54280**
Majorca White



Metric Chip 54281**
Palma Beige



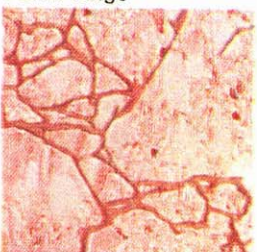
Metric Chip 54283**
Madura Taupe



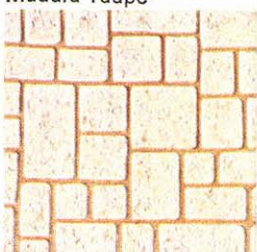
Dianna White 51203**
Trajan



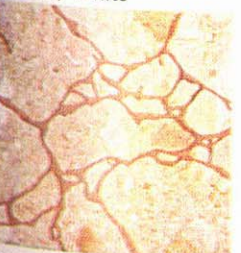
Polished Marble 54190**
Statuary White



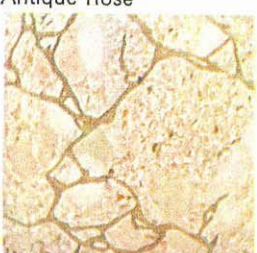
Polished Marble 54191**
Antique Rose



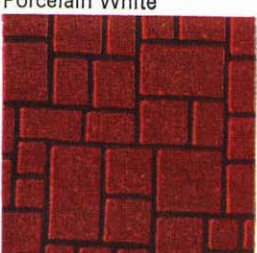
Random Mosaic 54261*
Porcelain White



Polished Marble 54192**
Peruvian Beige



Polished Marble 54193**
Meadow White



Random Mosaic 54262*
Terra Cotta Red

Section 8— Floors for homes, retail stores and other light to moderate traffic interiors

Armstrong

VINYL-ASBESTOS TILE

Standard (Smooth Surface) Excelon Tile

Available in a wide array of color combinations and design effects, Armstrong Standard (smooth surface) Excelon Tile is representative of today's most widely used resilient flooring materials. Specially formulated of pure vinyl resins fortified with asbestos fibers, it is an economical flooring, yet its many practical advantages include excellent durability and resistance to grease, oils, alkali, and household chemicals. Patterns marked (*) available in 9" x 9" tiles; (**) available in 12" x 12" tiles.

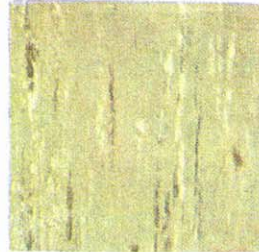
STANDARD (Smooth Surface) EXCELON TILE

Basic materials	Vinyl resins and asbestos fibers
Form/gauge	9" x 9"*, 12" x 12"***; 1/8" gauge (•), 1/16" gauge (■)
Subfloor application	Below grade, on grade, suspended
Recommended use (maximum)	1/8"—commercial 1/16"—residential
Approximate installed cost per sq ft	30¢-45¢
Recommended load limit per sq in.	25 lb
Resistance to heel damage	Fair
Resilience	Poor
Quietness	Poor
Durability	Excellent
Grease resistance	Excellent
Surface alkali resistance	Excellent
Resistance to staining	Good
Cigarette burn resistance	Excellent
Ease of maintenance	Excellent

Additional patterns shown on page 19.



Standard 56710*
White Bayberry



Standard 56721*
Bayberry Beige



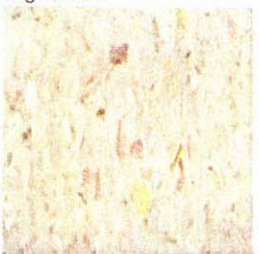
Standard 56770*
Seneca White



Standard 56777*
Apache Red



Woodtone 56850*
Light Oak



Tidestone 51761**
Waikiki White



Standard 56713*
Dakota White



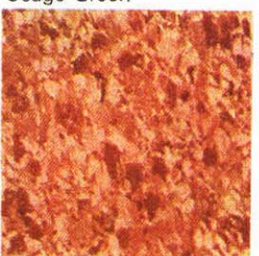
Standard 56759*
Fawn White



Standard 56771*
Mohawk Gray



Standard 56780*
Osage Green



Corkstyle 56840*
Light



Tidestone 51762**
Acapulco White



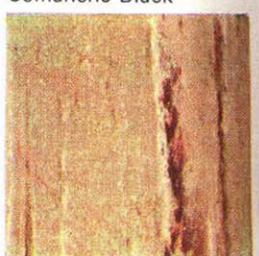
Standard 56714*
Algonquin White



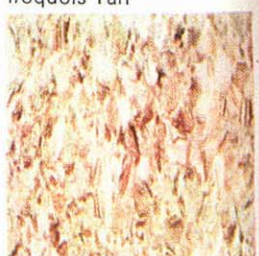
Standard 56767*
Ecru



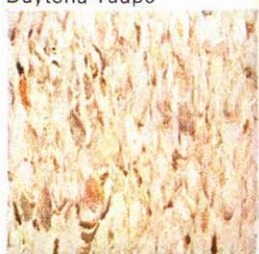
Standard 56772*
Comanche Black



Standard 56783*
Iroquois Tan



Tidestone 51760**
Daytona Taupe



Tidestone 51764**
Malibu Beige

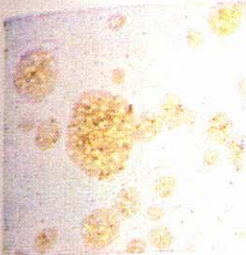
Section 8= Floors for homes, retail stores and other light to moderate traffic interiors

1968 (Section 8) Sweets

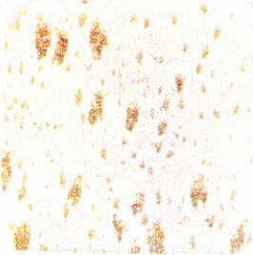
Armstrong Excelon Feature Tile

9" x 9", 12" x 12";
1/8" gauge only

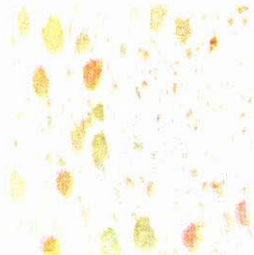
Recommended for use as feature color spots in custom floor designs, not as overall floor color.



Centennial 56818**
Largo White



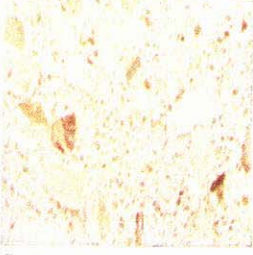
Dianna White 51200**
Olympus



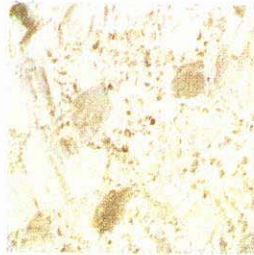
Dianna White 51201**
Pompeii



Driftstone 51160**
Inca Ivory



Driftstone 51161**
Aztec White



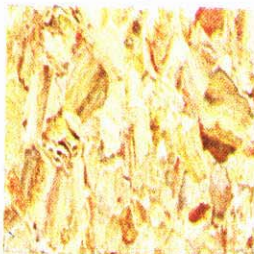
Driftstone 51166**
Amazon White



Coastal Stone 51791**
Shore White



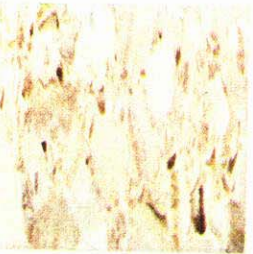
Palatial 51600**
Royal Rouge



Palatial 51601**
Nice Gold



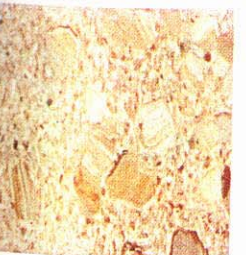
Coastal Stone 51792**
Dune Ivory



Palatial 51602**
Alba Beige



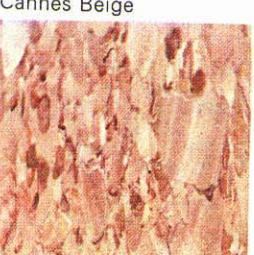
Palatial 51603**
Cannes Beige



Coastal Stone 51793**
Castle Beige



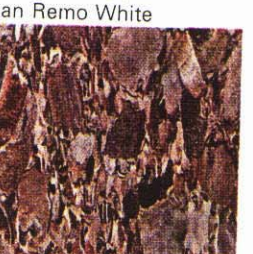
Palatial 51604**
San Remo White



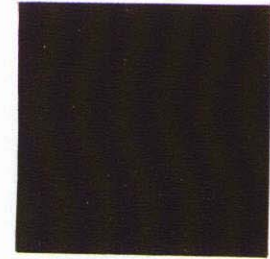
Palatial 51605**
Arles Taupe



Coastal Stone 51794**
Spray Green



Palatial 51606**
Prado Beige



56790 Black



56791 White



56800 Olive



56801 Burnt Orange



56802 Caramel



56803 Curry



56804 Burnt Umber



56805 Blue



56806 Red



56807 Neutral

Section 8= Floors for homes, retail stores and other light to moderate traffic interiors

Armstrong

Vinyl Cove Base

With a soft matte finish and an exclusive, new thin toe profile, Armstrong Vinyl Cove Base effectively trims off a resilient floor installation—and also helps hide minor wall and floor irregularities. Its distinctive profile consists of a reclining curvature at the top and a descending thin toe line which conforms snugly with wall and floor.

All colors are available in 2½" and 4" heights in .085" gauge. In ½" gauge, all colors are offered in the 4" height* on a special order basis of a minimum of 8,500 lineal feet. Corners may be easily hand formed on the job; or, preformed inside and outside corners, 4" high, .085" gauge, are available for all colors.



100 Black



101 Burnt Umber



102 Walnut



103 Beige



104 White



105 Bone White



106 Buff

*A 6" height and matching corners, No. 100 Black only, are available as a standard item in .085" gauge. (6" heights in all other colors, .085" gauge, are available on special order basis of 5,500 lineal feet minimum of a pattern.)

Decorator and Feature Strips

Armstrong Vinyl Corlon Decorator Strips and Excelon Tile Feature Strips make it easy and economical to create a wide variety of custom design effects.

Excelon Tile Feature Strips (50700 series) are available in ⅛" and ¼" gauges. One inch in width and 24" long, they are designed for use with Armstrong Excelon and Asphalt Tile floors of the same gauges.

Armstrong Corlon Decorator Strips (86100 series) are offered in ¼", ½", and 1" widths in .070" and .090" gauges. Suitable for use with Armstrong Sheet Vinyl Corlon, Linoleum and Vinyl Corlon Tile of the same gauges. Strips come in rolls of 50 lineal feet each.



107 Gray



108 Green



110 Light Beige



111 Medium Beige



112 Bayberry



130 Embossed Medium Walnut



131 Embossed Teak
(Gold 120 and Silver 121, not shown)

Straight Vinyl Cove Base (no "toe") is offered as a standard item in black, 4" height, .085" gauge only. All other colors also available on special order of 8,500 lineal feet or more.

Excelon Tile Feature Strips



50790 Black



50791 White



50797 Chocolate



50798 Pink



50800 Olive



50801 Burnt Orange



50802 Caramel



50803 Curry



50804 Burnt Umber



50805 Blue



50806 Red

Vinyl Corlon Decorator Strips



86140 White



86141 Buff



86142 Beige



86143 Walnut



86144 Umber



86145 Black



86146 Green



86147 Turquoise



86148 Blue



86149 Purple



86150 Red



86151 Orange
Also Gold 86130, Silver 86131, Copper 86132

Armstrong

Custom Vinyl Cork and Cork Tile

Armstrong Custom Vinyl Cork Tile combines the natural beauty of cork and the practical advantages of vinyl. A tough protective layer of clear vinyl is applied to the raw cork by a fusing process—sealing in the rich, warm tones of the natural cork.

Armstrong Cork Tile provides superior resilience and underfoot comfort. A special plastic finish makes it smoother, more scuff resistant, and easier to maintain.



41005 Natural



41007 Walnut



41009 Teak



41011 Parquet



40410 Mocha Tan

	CUSTOM VINYL CORK	CORK TILE
Basic materials	Raw cork and vinyl resins	Raw cork and resins
Form/gauge	9" x 9"; 1/8" gauge	9" x 9", 12" x 12"; 1/8", 3/16" gauges
Subfloor application	Suspended only	Suspended only
Recommended use (maximum)	Light commercial	Light commercial
Approximate installed cost per sq ft	\$1.50-1.75	60¢-1.00
Recommended load limit per sq in.	150 lb	75 lb
Resistance to heel damage	Very good	Good
Resilience	Very good	Superior
Quietness	Very good	Superior
Durability	Good	Fair
Grease resistance	Superior	Good
Surface alkali resistance	Very good	Good
Resistance to staining	Superior	Fair
Cigarette burn resistance	Fair	Good
Ease of maintenance	Superior	Fair

Armstrong

VINYL-ASBESTOS TILE Standard Excelon Tile

Excelon (vinyl-asbestos) Tile is representative of the most widely used of resilient flooring materials. Specially formulated of pure vinyl resins fortified with asbestos fibers, it is an economical flooring, yet its many practical advantages include excellent durability and resistance to grease, alkali, and dilute chemicals.

STANDARD EXCELON TILE

Basic materials	Vinyl resins and asbestos fibers
Form/gauge	9" x 9"; 1/8" gauge
Subfloor application	Below grade, on grade, suspended
Recommended use (maximum)	Commercial
Approximate installed cost per sq ft	30¢-40¢
Recommended load limit per sq in.	25 lb
Resistance to heel damage	Fair
Resilience	Poor
Quietness	Poor
Durability	Excellent
Grease resistance	Excellent
Surface alkali resistance	Excellent
Resistance to staining	Good
Cigarette burn resistance	Excellent
Ease of maintenance	Excellent



Standard 56710 White Bayberry



Standard 56713 Dakota White



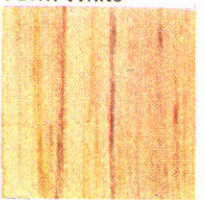
Standard 56714 Algonquin White



Standard 56721 Bayberry Beige



Standard 56759 Fawn White



Standard 56767 Ecu



Standard 56770 Seneca White

Standard Excelon Tile colors continued on page 12

Section 11= Resilient Floors for commercial, institutional, and industrial interiors

Armstrong

VINYL-ASBESTOS TILE

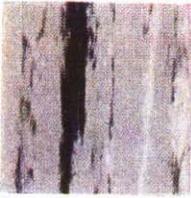
Imperial, Imperial Modern, and Travertex Excelon Tile

Noted for durability and ease of maintenance, these three lines of Excelon Tile are also popular for their styling. They meet the aesthetic requirements for modern commercial and institutional interiors. Their handsome appearance will last the life of the floor because the uniform grain-ing and color extend through the entire thickness of the tiles.

IMPERIAL, IMPERIAL MODERN, and TRAVERTEX EXCELON TILE

Basic materials	Vinyl resins and asbestos fibers
Form/gauge	9" x 9", 12" x 12"; 1/8" and 3/32" gauges as indicated
Subfloor application	Below grade, on grade, suspended
Recommended use (maximum)	1/8"—commercial 3/32"—light commercial
Approximate installed cost per sq ft	30¢-40¢
Recommended load limit per sq in.	25 lb
Resistance to heel damage	Fair
Resilience	Poor
Quietness	Poor
Durability	Excellent
Grease resistance	Excellent
Surface alkali resistance	Excellent
Resistance to staining	Good
Cigarette burn resistance	Excellent
Ease of maintenance	Excellent

Standard Excelon
Tile colors continued
from page 11



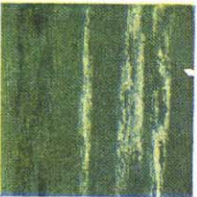
Standard 56771
Mohawk Gray



Standard 56772
Comanche Black



Standard 56777
Apache Red



Standard 56780
Osage Green



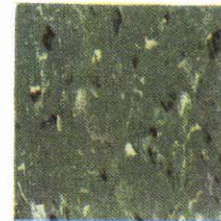
Standard 56783
Iroquois Tan



Woodtone 56850
Light Oak

Imperial

9" x 9", 12" x 12"; 1/8" gauge



Imperial 56871
Mint Green



Imperial 56872
Pebble Beige

Imperial Modern

9" x 9", 12" x 12"; 1/8" gauge
12" x 12" also 3/32" gauge



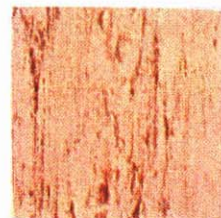
Imperial Modern 51853
Shadow Brown



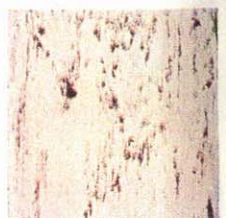
Imperial Modern 51854
Char Brown

Travertex

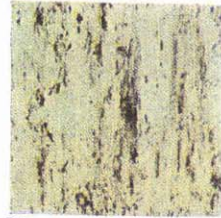
9" x 9", 12" x 12"; 1/8" gauge



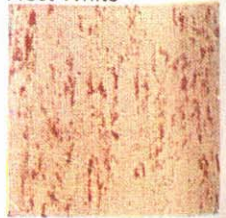
Travertex 51130
Briar Tan



Travertex 51131
Frost White



Travertex 51136
Teal Green



Travertex 51137
Harvest Ivory

Section 11—Resilient Floors for commercial, institutional, and industrial interiors

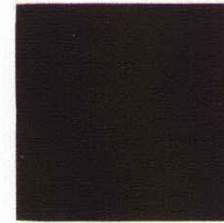
Armstrong

VINYL-ASBESTOS TILE

Excelon Feature Tile

These solid-colored tile have been created expressly for use as accent spots with other 1/8" gauge Excelon Tiles. They are not recommended for an entire flooring field because plain-colored floors of any composition tend to show scratches and soiling more readily than patterned materials.

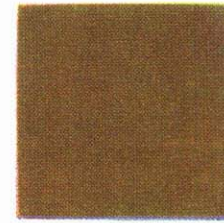
9" x 9", 12" x 12"; 1/8" gauge



56790 Black



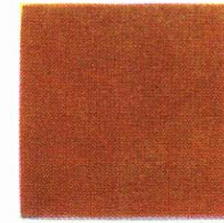
56791 White



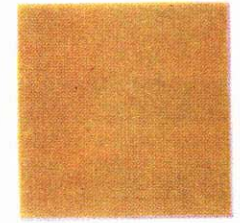
56800 Olive



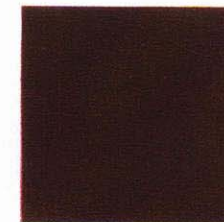
56801 Burnt Orange



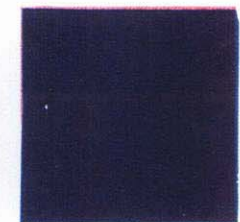
56802 Caramel



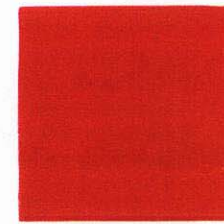
56803 Curry



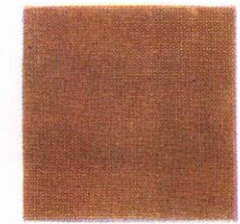
56804 Burnt Umber



56805 Blue



56806 Red



56807 Neutral

ial
gauge



Imperial 56861
Ancestral White



Imperial 56868
Mint White



Imperial Modern 51850
Fleece White



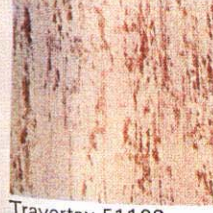
Imperial Modern 51855
Medium Cork



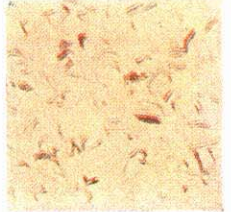
Imperial Modern 51858
Sandrift White



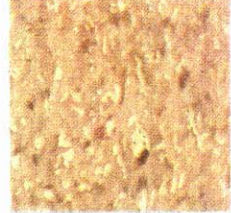
Travertex 51133
Cream White



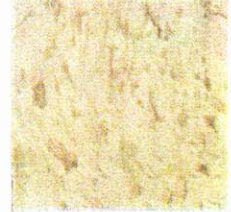
Travertex 51138
Nougat Beige



Imperial 56876
Wild Honey



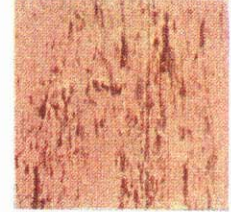
Imperial Modern 51851
Mellow Sand



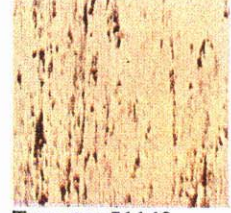
Imperial Modern 51856
Bayberry White



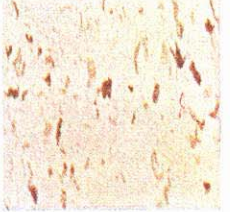
Imperial Modern 51859
Sable Gray



Travertex 51134
Sable Beige



Travertex 51142
Flax White



Imperial 56880
Terrace White



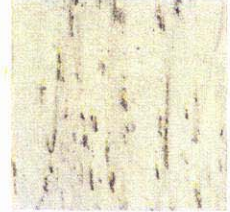
Imperial Modern 51852
Smoke Beige



Imperial Modern 51857
Olive



Imperial Modern 51860
Light Umber



Travertex 51135
Mist White



Travertex 51143
Hudson Seal

ial
gauge
gauge

1854

IX
gauge

Section 11= Resilient Floors for commercial, institutional, and industrial interiors

1968 (Section 11) Sweets