

Armstrong vinyl-asbestos tile

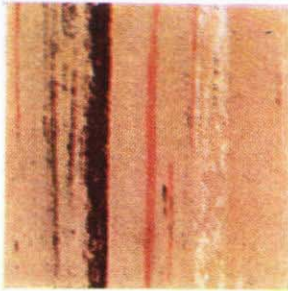
8b
Arm

Armstrong Excelon Tile is an economical, long-wearing flooring material made of vinyl resins fortified with asbestos fibers and offering the outstanding beauty and service of more expensive vinyl plastic tiles. The wide color range and the diversity of patterns answer the decorative requirements of almost any interior.

Excelon offers many extra advantages at a remarkably low first cost. It is exceptionally resistant to abrasion, greases, and stains and very economical to maintain. It has a most

appealing surface gloss and colors are bright, clear, and fast. Excelon Tile can be installed over almost any type of subfloor and at any grade level. Its flexibility, square corners, true edges, and uniform graining make it fast and economical to install.

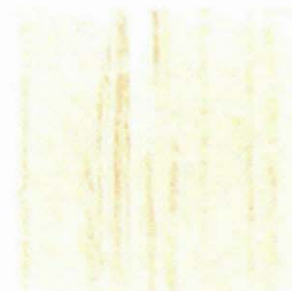
The Standard and Woodtone Series, illustrated below, are the best known and most popular of design types because the straight graining offers so many possibilities in arrangement and combination of tiles.



Waco Sand 702
1/4", 3/8", 1/2" gauges



Isleta Blue 711
1/4" gauge



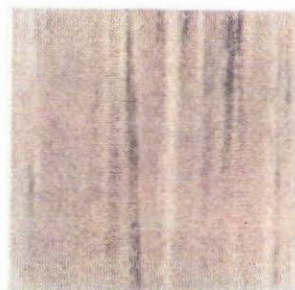
Dakota White 713
1/4", 3/8", 1/2" gauges



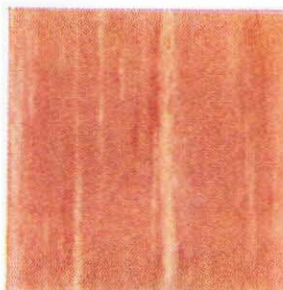
Cayuga Brown 715
1/4", 3/8", 1/2" gauges



Mint Green 760
1/4" and 3/8" gauges



Silver Gray 761
1/4" and 3/8" gauges



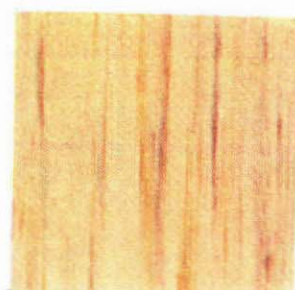
Sand Beige 762
1/4", 3/8", 1/2" gauges



Rose Taupe 763
1/4" and 3/8" gauges



Sienna Copper 765
1/4" gauge



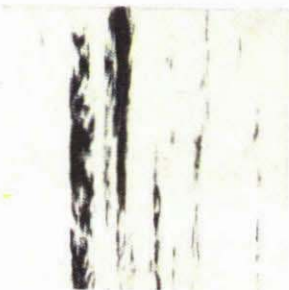
Ecru 767
1/4", 3/8", 1/2" gauges



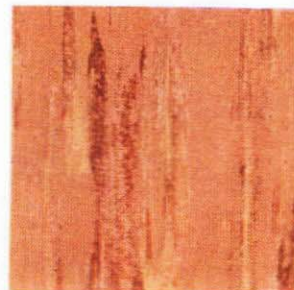
Mineral Gray 768
1/4" gauge



Kasha Taupe 769
1/4" and 3/8" gauges



Seneca White 770
1/4", 3/8", 1/2" gauges



Light Oak 850
1/4" and 1/2" gauges



Medium Oak 851
1/4" and 1/2" gauges



Dark Oak 852
1/4" and 1/2" gauges

9" x 9" tile • Illustrations are approximately 1/2 scale • 18 additional patterns.

Armstrong vinyl-asbestos tile

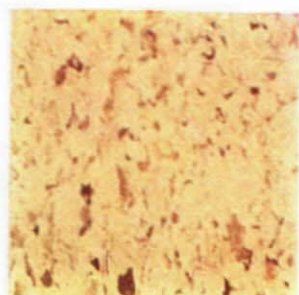
Excelon feature strips are available 1", 2", and 3" wide and 24" long in service ($\frac{1}{16}$ " and $\frac{1}{8}$ " gauges; plain red, white, brown, yellow, black, and green. 18" x 18" die-cut insets, not illustrated, are also made in standard popular designs; also can be had in special sizes and shapes.

Imperial Excelon Tile (vinyl-asbestos) is manufactured by an exclusive Armstrong process. It is a floor of exceptional beauty and extraordinary durability. The textured chip de-

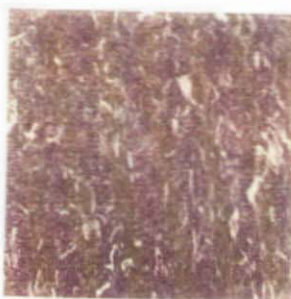
sign goes all the way through the tile—it can't wear away; it never blurs or disappears even in areas or lanes of the most highly concentrated traffic. An excellent flooring for heavy duty, Imperial Excelon is equally suitable when appearance and smart styling are of prime importance. With its subtle designs and superior uniformity of shades, it forms the perfect background for all types of decorative schemes. Imperial and all Armstrong Excelon tiles can be installed above, on, or below grade.



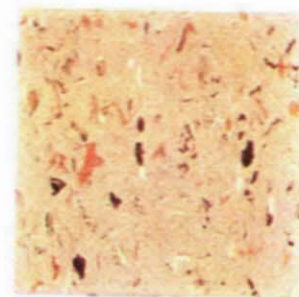
Ancestral White 861



Maplewood Tan 863



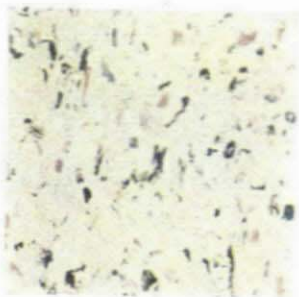
Pilgrim Taupe 864



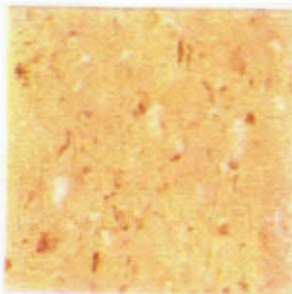
Coppertone Beige 865



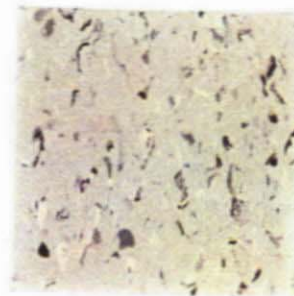
Corsair Black 867



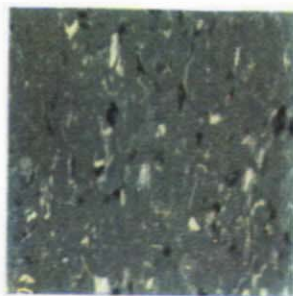
Mint White 868



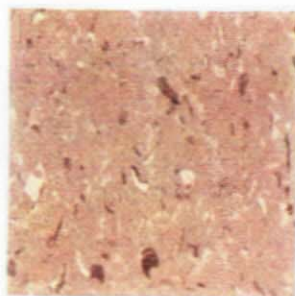
Ivory Tan 869



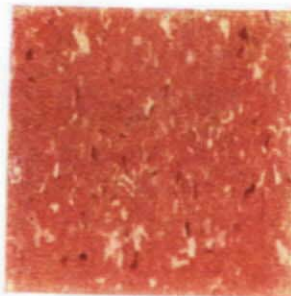
Pastel Gray 870



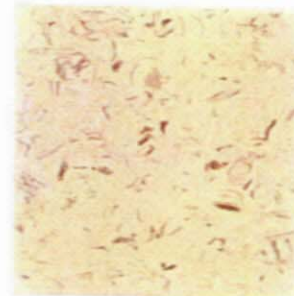
Mint Green 871



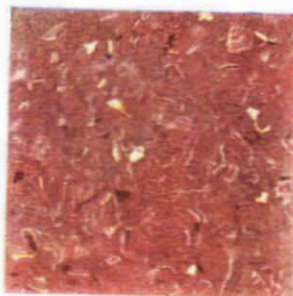
Pebble Beige 872



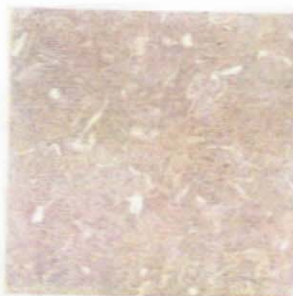
Dusty Cedar 874



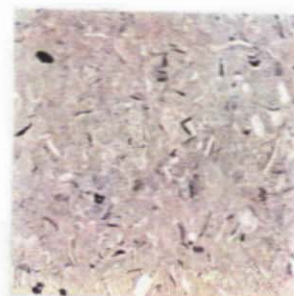
Wild Honey 876



Nutmeg Brown 877



Granite Gray 878



Autumn Gray 879

$\frac{1}{16}$ " and $\frac{1}{8}$ " gauges • 9" x 9" tile • Illustrations are approximately $\frac{1}{2}$ scale.

Armstrong vinyl-asbestos tile

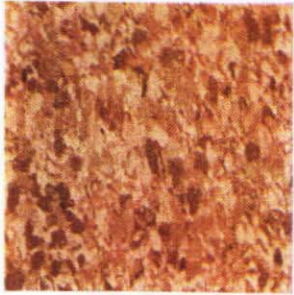
8b
Arm

Excelon Tile is made in a variety of high-style novelty effects, partially illustrated below, which enjoy great popularity in low-cost housing and remodeling markets.

Corkstyle, Spatter and Styletone Excelon Tile have random designs and colorations ranging from rich and subtle to bright and gay. All are easy to maintain because the broken detail of the patterns tends to conceal soil.

The charm of Metallic Excelon lies in the metal-like pigments which have been added. The newest look in vinyl-asbestos tile is found in Centennial Excelon Tile, made by a special Armstrong process which produces a shimmering, pearl-like graining with glistening silvery particles.

Illustrations below are 1/8" scale except in Centennial where full scale is necessary to adequately reproduce the effect.



Corkstyle 840
Light



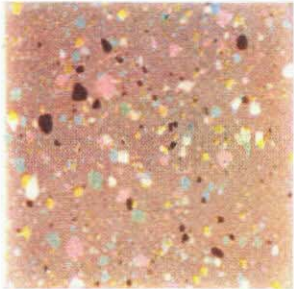
Corkstyle 841
Medium



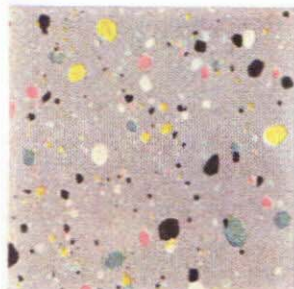
Corkstyle 842
Dark



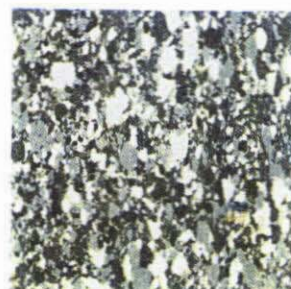
Spatter 735
Andover White



Spatter 747
Meriden Taupe



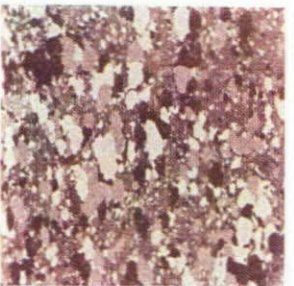
Spatter 749
Worcester Gray



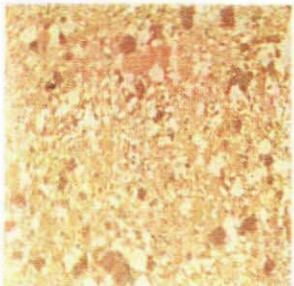
Styletone 831
Mintone



Styletone 833
Ivorytone



Styletone 834
Rosetone



Styletone 839
Beigetone



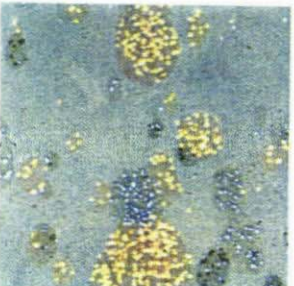
Metallic 352*
Ivory Gold



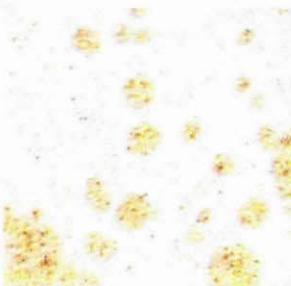
Metallic 356*
White Gold



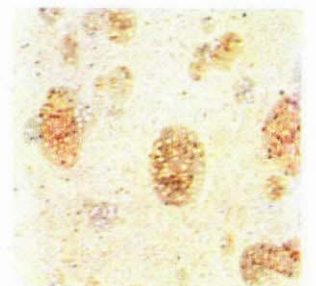
Centennial 802
Polka Gray



Centennial 815
Rhapsody Green



Centennial 818
Largo White



Centennial 819
Coda Bisque

1/8" (service) gauge • *indicates also 1/2" gauge • Additional patterns: 4 Spatter, 4 Styletone, 7 Centennial.