

# Armstrong

VINYL-ASBESTOS TILE

## EXCELON TILE

**Armstrong Excelon Tile** is a vinyl-plastic-asbestos tile with exceptional dimensional stability. It is unusually strong and tough and is resistant to oils, fats, and greases of both the edible oil and mineral oil types. Excelon Tile is also resistant to alkaline substances, soaps, detergents, kerosene, and many solvents. It has unusually good resistance to dilute acids and is recommended for floor areas, such as chemical laboratories, which may be subject to occasional spillage of acids. Excelon Tile also is fire retardant, meeting Columbia University fire tests.

Excelon Tile offers a finished floor of unusual beauty. Its wearing surface is unusually smooth and glossy—twice the surface gloss of the finest asphalt tile, as measured by the Gardner Glossmeter.

Five stylings in Excelon Tile offer a wide choice for effective floor designs. Straight grained, Woodtone and Designers Series Excelon are available in both  $\frac{1}{8}$ " Gauge and Service Gauge ( $\frac{1}{16}$ "). Corkstyle and Spatter Excelon are made in Service Gauge only. Excelon Tile in the  $\frac{1}{8}$ " Gauge is recommended for residential as well as commercial buildings and heavy traffic areas. Service Gauge Excelon Tile is recommended for attractive, easy to maintain floors, light commercial and residential interiors.

**Gauges**—Straight Grained, Woodtone, and Designers Series available in  $\frac{1}{8}$ " Gauge and Service Gauge ( $\frac{1}{16}$ "). Spatter and Corkstyle available in Service Gauge only.

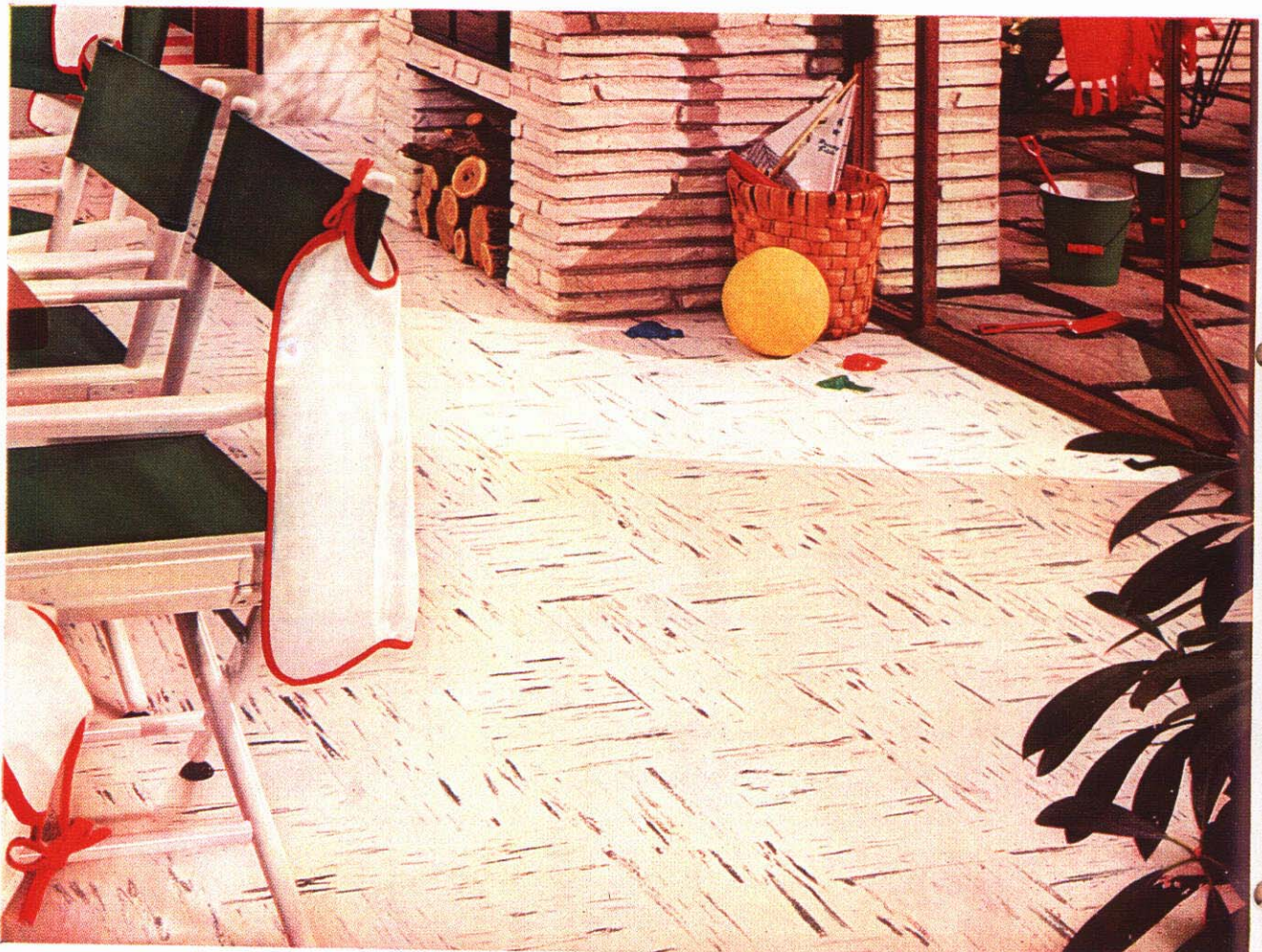
**Size**—9" x 9" tiles only.

**Cove Base**—See recommendations, page 37.

**Beveled Edging**—Excelon Beveled Edging is available in Service Gauge and Plain Black only. Use Asphalt Beveled Edging for  $\frac{1}{8}$ " Gauge Excelon.

**Specifications**—See flooring, page 40.

**Federal Specifications**—Armstrong Excelon Tile meets or exceeds the requirements of Interim Federal Specification No. L-T-751 (GSA-FSS) defining Type 1 Semi-Flexible Vinyl-Plastic Floor Tile.

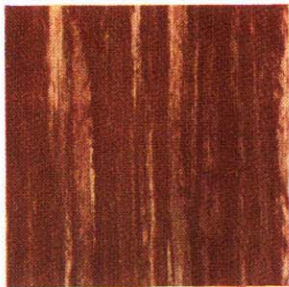


*Armstrong Excelon Tile has exceptional resistance to the harmful effects of grease, acids, alkalis, and most solvents. These characteristics make it a suitable floor for use in any interior and over all types of subfloors.*

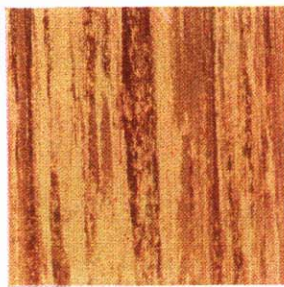
**EXCELON TILE—STRAIGHT GRAINED**

**Armstrong Excelon Tile** in handsome straight graining is available in 9" x 9" size in both 1/8" Gauge and Service Gauge (1/16"). All colorings are harmonized for design inter-mixing. The Woodtone stylings create especially rich floor effects.

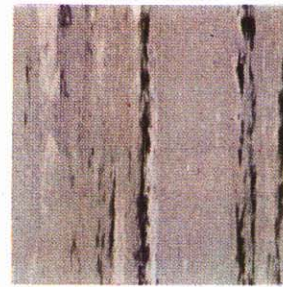
13i  
Ar



Dark Woodtone No. 789



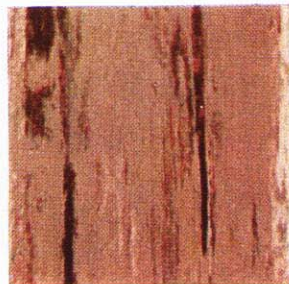
Light Woodtone No. 788



Mohawk Gray No. 771



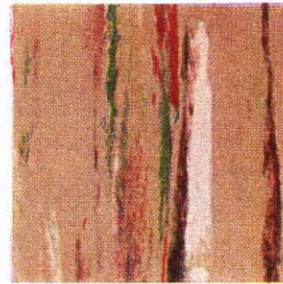
Choctaw Green No. 784



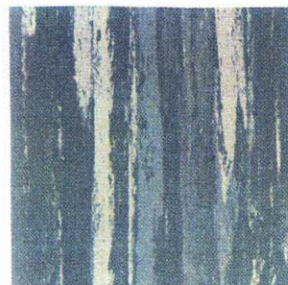
Iroquois Tan No. 783



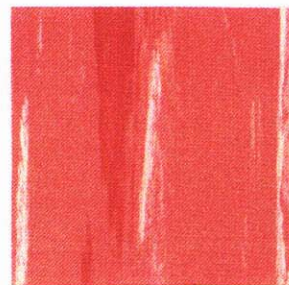
Comanche Black No. 772



Pawnee Beige No. 778



Powhatan Turquoise No. 787



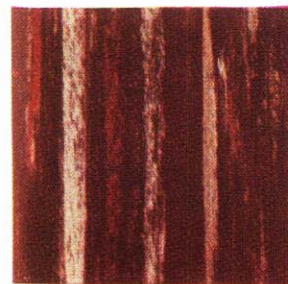
Sioux Pink No. 782



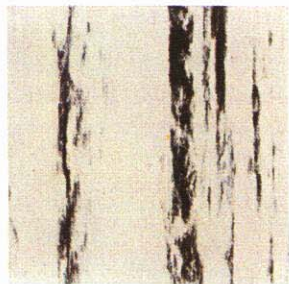
Mohave Charcoal No. 786



Navajo Gray No. 781



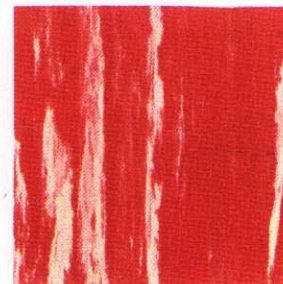
Zuni Brown No. 785



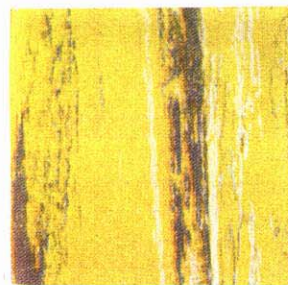
Seneca White No. 770



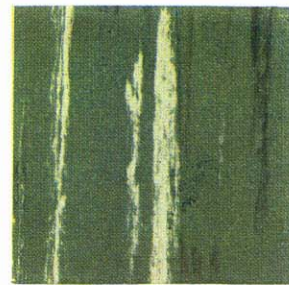
Mohican Cedar No. 779



Apache Red No. 777



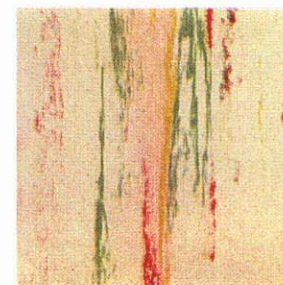
Seminole Yellow No. 774



Osage Green No. 780

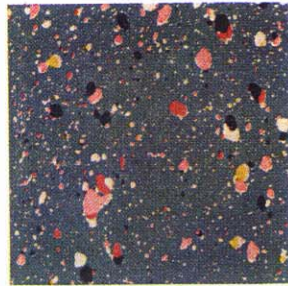


Aztec Gray No. 775

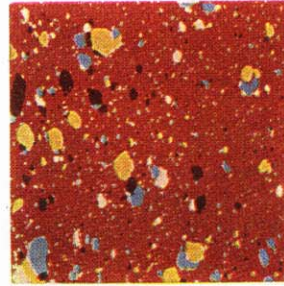


Cherokee White No. 776

**Spatter Excelon Tile** combines the popular spatterdash styling with the other outstanding characteristics of this vinyl-asbestos flooring. Many unusual flooring effects can easily be obtained by combining Spatter and straight grained Excelon styles.



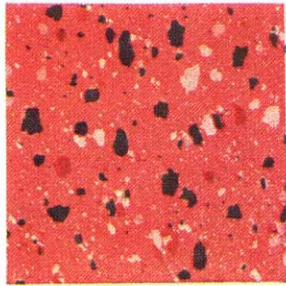
Norwich Turquoise No. 743



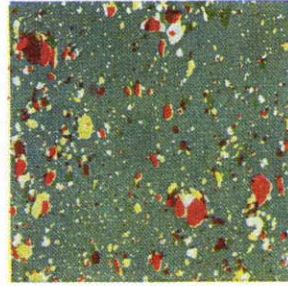
Bangor Copper No. 744



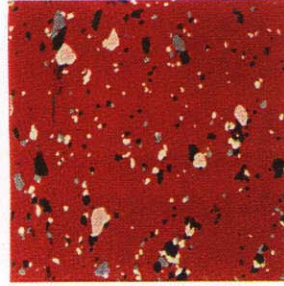
Andover White No. 735



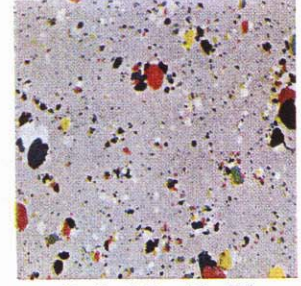
Plymouth Pink No. 745



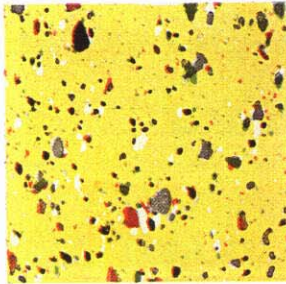
Lexington Green No. 738



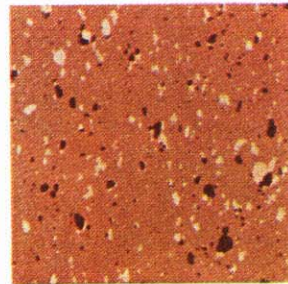
Exeter Red No. 741



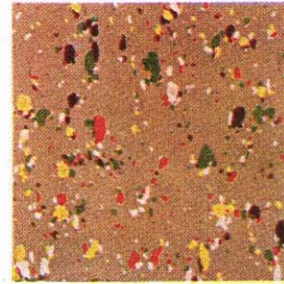
Bedford Gray No. 736



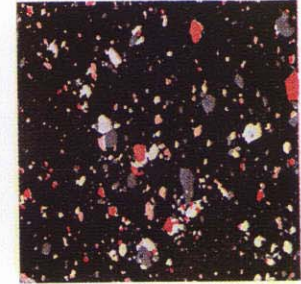
Concord Yellow No. 742



Arlington Cedar No. 740



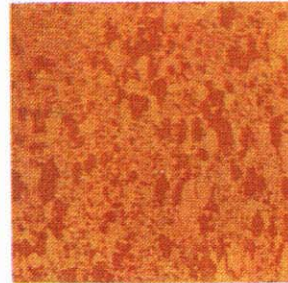
Cape Cod Beige No. 737



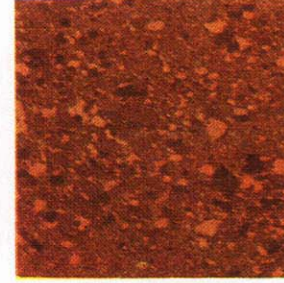
Providence Charcoal No. 739

**Corkstyle Excelon Tile** is available in 9" x 9" tiles and in Service Gauge only.

Each of the three tones in this series is designed to simulate a shading of natural cork. They may be used singly or combined to create custom floor effects.



Light Corkstyle No. 798



Medium Corkstyle No. 797



Dark Corkstyle No. 799



Plain Red No. 792



Plain White No. 791



Plain Brown No. 795



Plain Yellow No. 793



Plain Black No. 790



Plain Green No. 794

**EXCELON FEATURE STRIPS**

Armstrong Excelon Feature Strips 1" wide and 24" long are available in Service Gauge and 1/8" Gauge. There are six plain colors in the feature strip series.

Excelon Feature Strips may be used to set off borders and provide opportunity to create custom effects in Excelon Tile Floors.

**Design**  
**celon Ti**  
group o  
on-tone  
1/8" and  
These m  
flect the  
of today  
ious dec  
Like  
strong E  
terns,  
Series of  
beauty a  
a mode  
vinyl co  
floor hig  
grease, o  
househol  
agents.  
kali resi  
can be i  
ments, o  
suspend



EXCELON TILE—DESIGNERS SERIES

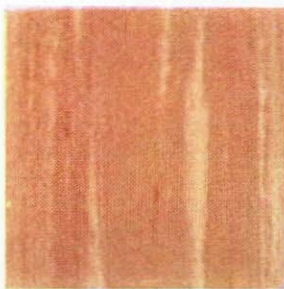
13i  
Ar

**Designers Series Excelon Tile** is a special group of delicate tone-on-tone colorings in both  $\frac{1}{8}$ " and Service Gauge. These muted colors reflect the quiet richness of today's most luxurious decorator stylings.

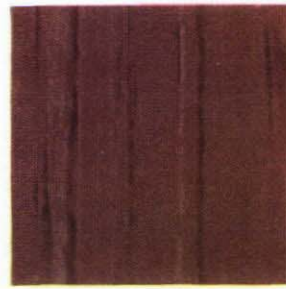
Like the other Armstrong Excelon Tile patterns, the Designers Series offers outstanding beauty and durability at a moderate cost. Its vinyl content gives this floor high resistance to grease, oils, and normal household chemical reagents. Durable and alkali resistant, this floor can be installed in basements, on grade, and on suspended floors.



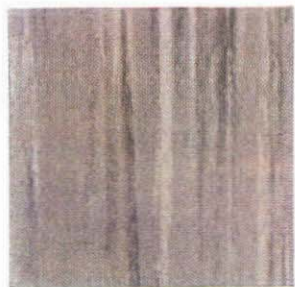
Sienna Copper No. 765



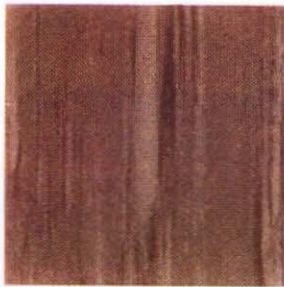
Sand Beige No. 762



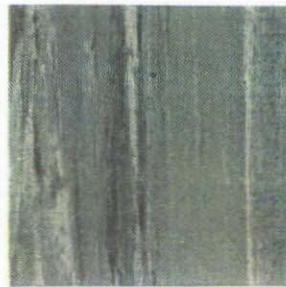
Mauve Taupe No. 764



Silver Gray No. 761



Rose Taupe No. 763



Mint Green No. 760



*Subtle tones of Designers Series Excelon Tile hide tracked-in dirt, retain the beauty of plain colors.*