

**EXCELON TILE — DESIGNERS SERIES**

7c  
Ar

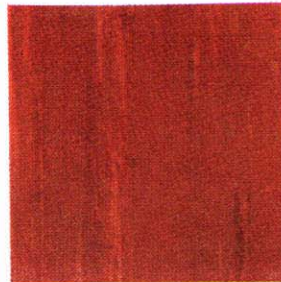
**Armstrong Excelon Tile** is a vinyl-plastic-asbestos tile with exceptional dimensional stability. It is unusually strong and tough and is resistant to oils, fats, and greases of both the edible oil and mineral oil types. Excelon Tile is also resistant to alkaline substances, soaps, detergents, kerosene, and many solvents. It has unusually good resistance to dilute acids, and is recommended for floor areas, such as chemical laboratories, which may be subject to occasional spillage of acids. Excelon Tile also is fire-retardant, meeting Columbia University fire tests.

Excelon Tile offers a finished floor of unusual beauty. Its wearing surface is unusually smooth and glossy—twice the surface gloss of the finest asphalt tile, as measured by the Gardner Glossmeter.

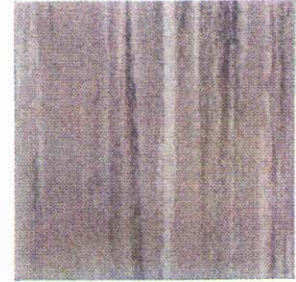
Excelon Tile may be installed over any firm, sound, smooth subfloor, whether suspended, grade-level, or below-grade. It is suitable for installation over wood, hardboard, and plywood subfloors, as well as concrete, magnesite and other monolithic underfloors.

**Federal Specifications**—Armstrong Excelon Tile meets all the requirements of Interim Federal Specifications No. L-T-751 (GSA-FSS) dated March 18, 1952, which defines Type I Semi-Flexible Vinyl Plastic Floor Tile.

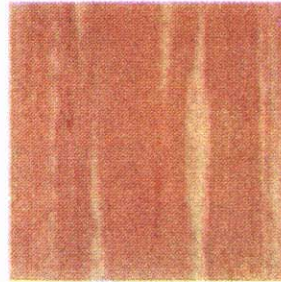
**Size**—9" x 9" tiles only.  
**Gauges**—Service Gauge (1/16") and 1/8" Gauge.  
**Cove Base**—See recommendations on page 35.  
**Specifications**—See flooring, page 39.



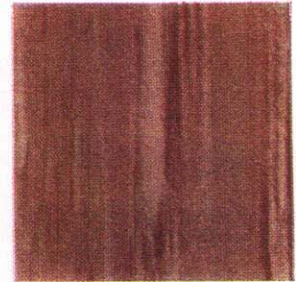
Sienna Copper No. 765



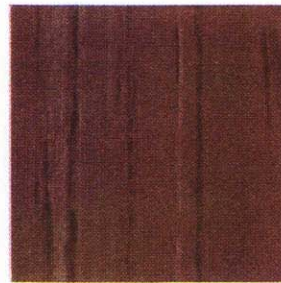
Silver Gray No. 761



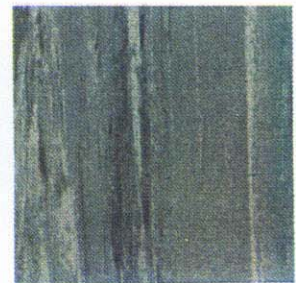
Sand Beige No. 762



Rose Taupe No. 763



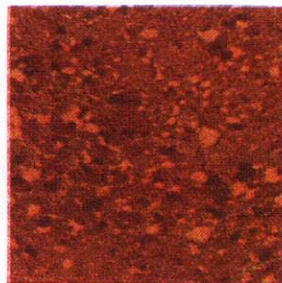
Mauve Taupe No. 764



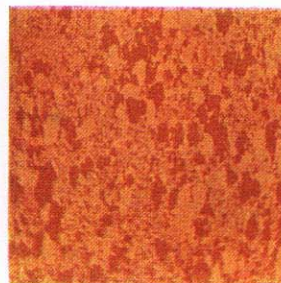
Mint Green No. 760

Armstrong Corkstyle Excelon Tile is available in 9" x 9" tiles and in Service Gauge only.

Each of the three tones in this series is designed to simulate a shading of natural cork. They may be used together to create custom floor effects.



Medium Corkstyle No. 797



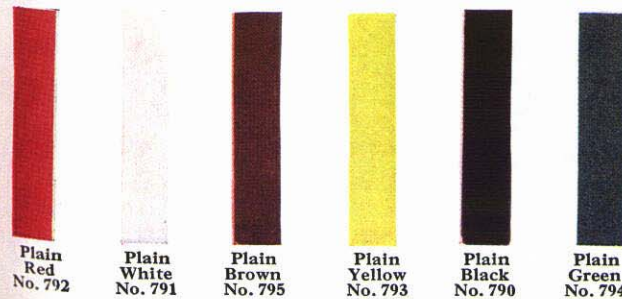
Light Corkstyle No. 798



Dark Corkstyle No. 799

light  
dark  
sting

12"  
ween  
riety  
left.



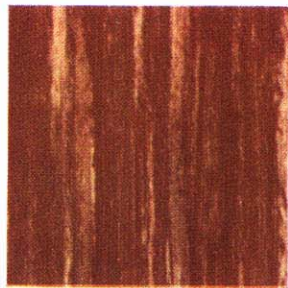
**EXCELON FEATURE STRIPS**

Armstrong Excelon Feature Strips 1" wide x 24" long are available in Service Gauge and 1/8" Gauge. There are six plain colors in the feature strip series.

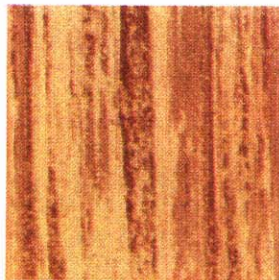
These feature strips may be used as borders or to create custom effects in Excelon Floors.

**REGULAR EXCELON TILE**

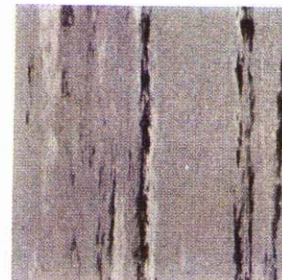
**Regular Excelon Tile** is made in 9" x 9" size in both Service Gauge ( $\frac{1}{16}$ " ) and  $\frac{1}{8}$ " Gauge. Physical and service characteristics of Regular Excelon Tile are the same as described on pages 23 and 24 in reference to the Designers Series and Spatter Excelon Tile.



Dark Woodtone No. 789



Light Woodtone No. 788



Mohawk Gray No. 771



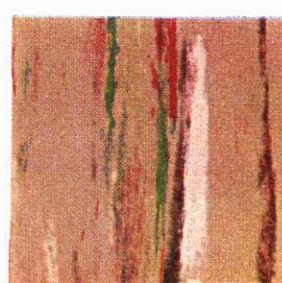
Choctaw Green No. 784



Iroquois Tan No. 783



Comanche Black No. 772



Pawnee Beige No. 778



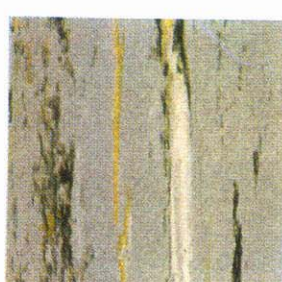
Powhatan Turquoise No. 787



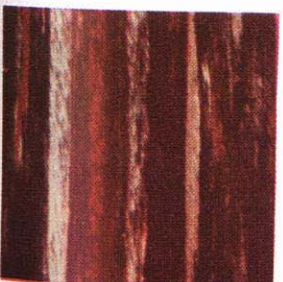
Sioux Pink No. 782



Mohave Charcoal No. 786



Navajo Gray No. 781



Zuni Brown No. 785



Seneca White No. 770



Mohican Cedar No. 779



Apache Red No. 777



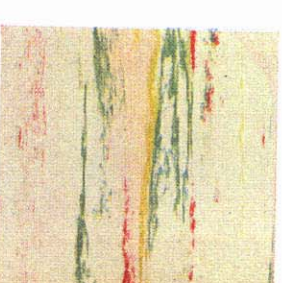
Seminole Yellow No. 774



Osage Green No. 780



Aztec Gray No. 775



Cherokee White No. 776

$\frac{7c}{Ar}$

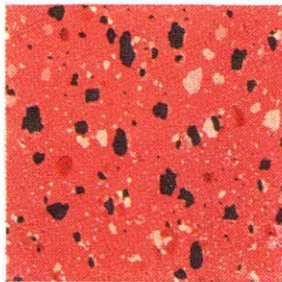


SPATTER EXCELON TILE

**Armstrong Spatter Excelon Tile** combines the popular spatterdash styling with the outstanding service characteristics of this vinyl asbestos flooring. Spatter Excelon Tile has the same physical characteristics as regular Service Gauge Excelon Tile. Excelon Tile is a fire-retardant composition. It will withstand the harmful effects of grease, oils, and fats. In addition, it also is resistant to alkaline substances, soaps, detergents, kerosene, and many other solvents.

Outstanding in appearance in a single color or with several Spatter colorings combined, many unusual floor effects also can be obtained by combining the Spatter styling with straight-grained Excelon Tile.

Spatter Excelon Tile is available in Service Gauge and 9" x 9" tiles only. It is recommended for installation over suspended, on- or below-grade subfloors. Extremely flexible, it "seats" rapidly even over cold slabs and readily conforms to the subfloor.



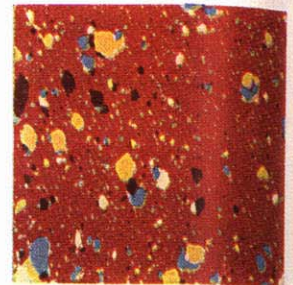
Plymouth Pink No. 745



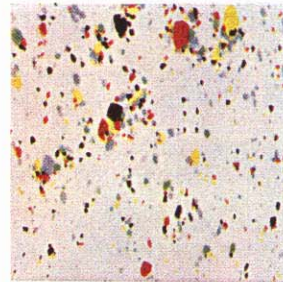
*Spatter Excelon Tile is an excellent floor for kitchens since it is highly resistant to grease, acids, alkalis and solvents. The spatter design helps conceal dirt and footprints until they can be cleaned up.*



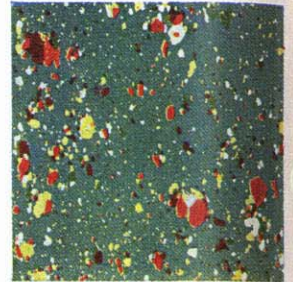
Norwich Turquoise No. 743



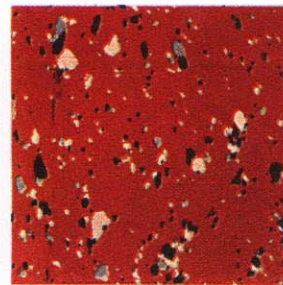
Bangor Copper No. 744



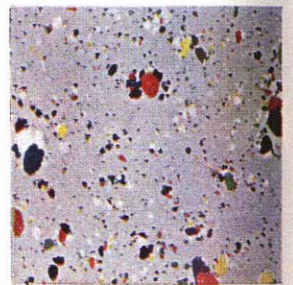
Andover White No. 735



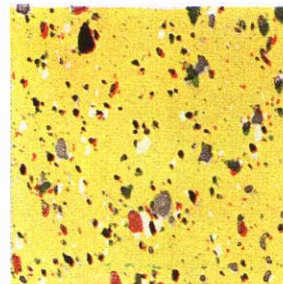
Lexington Green No. 738



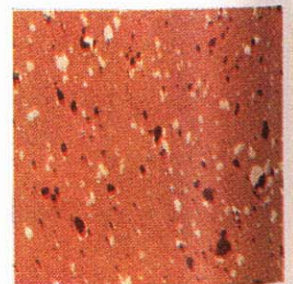
Exeter Red No. 741



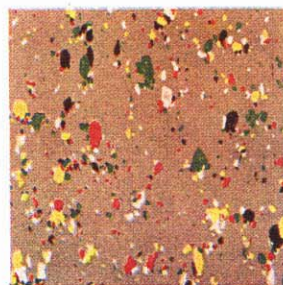
Bedford Gray No. 736



Concord Yellow No. 742



Arlington Cedar No. 740



Cape Cod Beige No. 737



Providence Charcoal No. 739